

UNIVERSITY SENATE
First Meeting, Monday, 10 September 2018, 2:30 p.m.
Pfendler Hall, Deans Auditorium

AMENDED AGENDA

1. Call to order Professor Natalie J. Carroll
2. Approval of Minutes of 16 April 2018
3. Acceptance of Agenda
4. **Remarks of the Senate Chair** Professor Natalie J. Carroll
5. **Remarks of the President** President Mitchell E. Daniels, Jr.
6. Question Time
7. **Résumé of Items Under Consideration** For Information
by Various Standing Committees Professor Gerald E. Shively
8. **Senate Document 17-16 A Resolution on Environmental and Economic** For Action
Sustainability at Purdue University Professor Jonathan J. Neal
9. **Annual Report from the Athletic Affairs Committee** For Information
Professor Jon A. Story
10. **Update from the Kaplan Entity Special Committee** For Information
Committee Co-Chairs Stephen P. Beaudoin and Deborah L. Nichols
11. **Update from the Purdue Student Government** For Information
PSG President Aaron Banks
12. **Update from the Butler Center for Leadership Excellence** For Information
Director Mangala Subramaniam
13. New Business
14. Memorial Resolutions
15. Adjournment

UNIVERSITY SENATE

First Meeting, Monday, 10 September 2018, 2:30 p.m.
Pfendler Hall, Deans Auditorium

Present: *President M. E. Daniels Jr., J. W. Camp (Secretary of Faculties and Parliamentarian), Natalie Carroll (Chair of the Senate), C. A. Cooky (Vice-Chair of the Senate), K. Abrahamson, R. Adams, K. Ajuwon, J. T. Akridge, B. J. Alge, T. Bailey, J. Ann Banks, A. Banks, A. M. Beck, F. Berry, G. Blaisdell, S. M. Brouder, R. X. Browning, C. E. Butzke, L. Claxton, C. W. Clifton, M. Conaway, M. Corless, B. Craig, C. Das, V. Duffy, D. S. Elliott, C. Fisher, R. Fouché, A. Francis, A. Freed, M. T. Harris, C. A. Hill, S. Hooser, W. J. Hutzler, A. Irfanoglu, J. Janick, R. Kaufmann, T. Kelley, N. Knobloch, D. Koltick, N. Kong, E. P. Kvam, J. M. LaLopa, D. J. Love, R. Lucht, R. Malo, E. T. Matson, K. Matsuki, W. McBride, T. McGraw, H. A. McNally, J. Neal, D. L. Nichols, L. Nies, R. Nowack, E. Otarola-Castillo, J. Pula, R. Rapp, J. Reynolds, J. Rhoads, M. Rispoli, P. Robinson, L. Rokhinson, A. Ruple, A. Samarapungavan, D. Saraswat, L. Sherman, G. E. Shively, T. Sizyuk, D. W. Smith, Q. Song, J. A. Story, W. E. Sullivan, H. Sypher, M. Thom, S. Wereley, N. J. Olynk Widmar, K. Williams, J. F. Yacilla, H. Beasley, J. Huber, B. McCuskey, A. Rodriguez, A. C. Rollock, K. L. Sermersheim, M. Smith (Jeremy Wampler), B. Vale, D. Vukobratovich, and S. Johnson (Sergeant-at-Arms).*

Absent: S. C. Chang Alexander, T. Bhattacharya, S. S. Broyles, J. Cover (SABB), E. J. Delp III, J. Dworkin, D. Eichinger, D. Ferullo, M. Gribskov, J. Harris, R. E. Jones, Y. Kaakeh, E. Kossek, S. Lee, M. Lill, S. Martin, S. No, J. Ogg, J. Olek, R. Pinal, L. Prokopy, D. Sanders, B. H. Sorge, S. Stevenson, B. Zenor, M. B. Cline, F. J. Dooley, B. Frazee, P. Hollenbeck, L. Kane, J. L. Mohler, M. Warren.

Guests: E. Howat (Athletics), J. Rickus (Provost Off), M. Towns (CHEM), A. Nickel (M&M), V. O'Brien (M&M), J. Day (HTM), T. Klingerman (Legal), A. Weliever (Exponent), S. Deery (M&M), P. VanFossen (Faculty Athletic Rep), M. Driscoll (Physical Facilities), S. Beaudoin (Institutional Research), A. Friedman (Biology), and H. Coats (Exponent).

1. The meeting was called to order at 2:35 p.m. by Chairperson Natalie Carroll.
2. The minutes of the 16 April 2018 Senate meeting were approved as distributed.
3. The September Senate Agenda was accepted as distributed.
4. Professor Natalie Carroll presented the remarks of the Chairperson (see **Appendix A**).
5. President Mitchell E. Daniels, Jr. presented remarks of the President (see **Appendix B**).
6. Question Time:
 - Professor Jules Janick asked what happened with the previously proposed trimester system. President Daniels said he asked himself about that. We have not recently looked at going to a formal trimester system. We seem to be headed in that direction with more summer study, for example. We are focused on ensuring that students can graduate on time or even sooner. The average time to complete a Purdue degree is down to 4.3 years for all undergraduate students. This was a topic under discussion when President Daniels arrived on campus and many practical problems with the calendar were brought to light. The issues about the calendar were raised by faculty members. Unless Provost Akridge wishes to revive it, we will continue to work on flexibility and more options for students to move at the pace they choose without forcing everyone into a three-semester system. If the Senate ever recommended a workable trimester system, President Daniels would listen to the

proposal, but it has not been a subject of serious discussion for about four years. As a follow-up, Professor Chris Clifton reminded the Senate that students who take summer courses are students who are not doing valuable internships. We do not want to hurt students who wish to further their career development and education through internships by denying them those opportunities. President Daniels agreed with Professor Clifton and noted that we promote internships and international studies in the summer. Some of these students are on internships. In addition, most of the growth in summer enrollment has been online. This allows students to take classes while working or doing an internship. Provost Akridge stated that many students are on summer research projects and are picking up one or two classes. President Daniels said that we hope that every student has the opportunity to have an internship while at Purdue University and we will do whatever we can to expand those options.

- Professor Paul Robinson noted that President Daniels described the savings that have allowed the continuation of the tuition freeze and then asked: “How long can Purdue University continue with the freeze and at what point would it be changed?” President Daniels could answer the first question. In answer to the second question, President Daniels said that the year in which we do not run an operational surplus will be the year in which an adjustment in tuition is made. However, as long as we can meet certain conditions; pay the annual bills of the University, continue to give annual increases in pay at the peer level for faculty and staff, add the faculty and staff that are needed and make other important investments without dipping in to the reserves, we will not raise tuition. President Daniels recognizes that the day will come when adjustments need to be made. He and the Board of Trustees also realize that the enrollment trends will not continue to rise indefinitely and are planning accordingly so that appropriate infrastructure is available without overbuilding as some institutions have done.

7. Professor Gerald E. Shively, Chair of the Steering Committee, presented the Résumé of Items under Consideration (ROI) by various standing committees (see [Appendix C](#)). The Chairs of the Senate Standing Committees briefly described the current activities of their respective committees. Professor Jeremy Reynolds of the Senate Nominating Committee mentioned that the Committee members are still looking for more volunteers for Senate Standing Committees and Faculty Committee and interested individuals can contact The Chair of the Nominating Committee, Professor Frederick Berry.

8. Professor Jonathan Neal presented [Senate Document 17-16](#), *A Resolution on Environmental and Economic Stability at Purdue University*, for Action. He explained the rationale for the document. Professor William Hutzel made a motion to approve the document. His motion was seconded and discussion followed.

- Professor Vincent Duffy asked: “How the definition of sustainability came about and if there had been consideration of the social aspects of this proposal?” There may be opportunities for integration with other committees’ activities. Professor Neal said that the definition of sustainability definition is purposely vague. Professor Neal called on the Chair of the Sustainability Committee, Professor Jonathon Day to answer the questions. Professor Day said that the focus of the resolution has been on environmental and economic sustainability. While many definitions of sustainability include the social aspects this resolution focused specifically on those two elements. In particular, the focus is on the work of the planning and facilities sides of the University’s activities. It is the Intention of the resolution to include economic and environmental sustainability in University master planning and other

University planning activities. The social aspects of sustainability can follow later. Professor Duffy asked: “How were the definitions and measures defined that suggest we are lower than our peers?” Professor Day said that one of the key elements is that we use a standardized set of measures for sustainability. It is one thing to say we want to be sustainable and another to do be able to measure and identify metrics against which we can report transparently. The recommendation is to use an established framework, one that the professional staff members of the University are already familiar with and that meets industry standards.

- Professor Christopher Clifton noted that many of our peer institutions are already doing this he asked: “How economically feasible is it to be top quartile if we are already behind. Has that been investigated?” Professor Neal said that the top quartile is a goal where we want to be. With many sustainability issues doing them in a sustainable manner will be economically more viable in the long run. Professor Clifton noted that what Professor Neal mentioned is already present in part “e” of the resolution. Professor Clifton was concerned that achieving top quartile will demand investments that could be extreme and he hopes it will be considered.
- Professor Mark Thom noted that when the resolution came up last spring, a well-versed colleague asked about the metric being used and if it is still being used in the document. Professor Day (returning to Professor Clifton’s question about the top quartile) said that the time to get into the top quartile was deliberately left open as an aspirational goal. The discussion in committee involved maintaining Purdue’s prudent economic approach while increasing the focus on sustainability. Responding to Professor Thom’s question, Professor Day said that the resolution outlines two things: 1) Transparency in the metrics that are used, and 2) we will use a set of metrics that are acceptable across peer institutions. The resolution suggests that AASHE is one of the industry standards and that we actually have professional staff involved in the AASHE process. It does not make it prescriptive that AASHE is the only process used. If there are faculty with concerns and/or suggestions about what metrics to use, he would put those suggestions to the professional staff. Whether AASHE is the right or wrong choice is beyond the scope of the resolution.
- Professor Gerald Shively supports the resolution, but is concerned that we might allow the “great to become the enemy of the good”. We need not search for the perfect statement about sustainability or definitions that we can all agree on. We will never move this forward if we seek complete agreement. It is important that we have a Purdue University statement available that we can build on and improve upon in the future.
- Professor Ralph Kaufmann made a motion to amend the document by deleting part “d”. His motion was seconded by Professor Clifton. Professor Kaufmann suggested that this Section sets a bad precedent that would allow administrators to expand their roles in determining courses to be taught as well as design of curricula. Professor Clifton supported the amendment because the wording does not make sense. Following the discussion, the vote was taken and the amendment to strike part “d” passed with 36 votes in favor, 32 in opposition with 5 abstentions. Section “d” was struck from the document.
- Professor Ayhan Irfanoglu made a motion to strike the word “strategic” from throughout the document. His motion was seconded by Professor Corless. Following a brief discussion, this amendment was defeated with 7 votes in favor, 65 votes in opposition and 1 abstention. The word “strategic” remained in the document.

The vote on the amended document was taken and the motion passed with 58 votes in favor, 9 in opposition with 1 abstention.

9. Professor Jon Story, the Student Affairs Committee (SAC) liaison to the Athletic Affairs Committee (AAC), presented the Annual AAC report to the Senate (see [Appendices D and E](#)).
10. Professor Stephen Beaudoin and Deborah Nichols, Co-Chairs of the Kaplan Entity Special Committee, provided an update from the Committee (see [Appendix F](#)). Following the presentation questions were taken from the floor.
 - Professor Shively thanked the Professors Nichols and Beaudoin for their thorough and professional efforts.
 - Professor Kipling Williams asked: “To what extent are we concerned about academic dishonesty for Purdue Global?” Professor Beaudoin said that they have not been asked to look at the issue, but they will put it on their list and it will be looked into.
 - Professor Kathy Abrahamson wondered if there was any discussion about increasing the definition of Channel Conflicts. The School of Nursing does not currently have any completely online programs, but does have some programs that are predominantly online that attract students from a wide geographical area. Hence, our School of Nursing is competing with Purdue University Global for students. This competition confuses the students and the students are not always aware of the different faculty requirements for the different programs. In addition to the listed Channel Conflicts, she suspects there are other Channel Conflicts that are not listed. Professor Nichols said that the discussion of Channel Conflicts between Purdue Northwest and Purdue Global occurred at the level of the Provost and Provost Akridge verified that. Provost Akridge will ensure that a discussion between the Nursing Programs of Purdue West Lafayette and Purdue Global will be put on the “radar” of Vice Provost Frank Dooley. In response to Professor Abrahamson, Professor Nichols said that they are aware of existing conflicts such as those with the hospitals in Indianapolis and the matters are under consideration.
 - Professor Alberto Rodriguez asked for clarification about the arbitration agreement that students at Purdue Global have to sign. To him, this suggests the students are giving up their rights to sue Purdue Global. Professor Nichols said that we need to get side-by-side comparisons of the policies, for example, the grade appeals process. They have the same rights as Purdue West Lafayette students with the addition of the arbitration component. They have to follow the procedures and policies first, but the opportunity to sue exists, if arbitration fails. The same holds for Purdue University students. Professor Rodriguez would like the committee to look into the issue in more detail to ensure the students retain their rights. Professor Beaudoin asked Professor Rodriguez to summarize his concerns and send them to him.
11. Purdue Student Government (PSG) President Aaron Banks provided an update on PSG activities and plans for this year (see [Appendix G](#)).
12. Director of the Butler Center for Leadership Excellence, Professor Mangala Subramaniam, provided a report about the Center (see [Appendix H](#)).
13. No memorial resolutions had been received.
14. Having no additional business, the meeting adjourned at 4:35 p.m.

To: Purdue University Senate
From: University Resources Policy Committee
Subject: Sustainability Strategic Plan for Purdue University
Disposition: University Senate for Discussion and Approval

A Resolution on Environmental and Economic Sustainability at Purdue University

Whereas, sustaining our economy and environment for the long term is a grand challenge for our society, one where universities can play an important role,

Whereas, attaining sustainability of economy and environment is at the leading edge of innovation and technology, and therefore imperative aspects for education and research at Purdue,

Whereas, many leading business and academic organizations in Indiana, both business and academic, have made substantial commitments to sustainability targets, most notably in energy production and use (“carbon footprint”),

Whereas, many of Purdue’s peer academic institutions have also made substantial commitments to sustainable operations and to reporting their subsequent performance by mechanisms, such as AASHE STARS (Association for the Advancement of Sustainability in Higher Education Sustainability Tracking, Assessment & Rating System),

Whereas, Purdue’s peers in the Big 10 have compiled a positive record of involvement with AASHE STARS (8 Gold rankings and 3 Silver),

Whereas, the Purdue administration committed to the URPC over 18 months ago to develop a strategic plan for sustainability,

Whereas, the university has long prided itself on an excellent record of prudent fiscal management,

Be it resolved, the Purdue University Senate proposes that:

- a) Purdue develop a strategic plan that sets goals placing us in the top quartile of Big 10 institutions and commits to achieving those targets;
- b) Purdue adopt a transparent reporting framework (AASHE STARS or similar) to measure our performance against these targets;
- c) These sustainability goals become an integral part of master planning for the campus;
- d) Purdue make any investment in sustainable outcomes that can be expected to show a positive financial return over a 10-year time period, both as means for achieving the goals of the strategic plan and as part of a general commitment to sustainability and fiscal prudence;
- e) The Provost and the Chief Financial Officer make yearly reports to the Purdue Senate on the academic, physical, and financial aspects of the sustainability plan, outlining progress and describing both future prospects and any difficulties in achieving the goals in the strategic plan.

Approved by URPC, April 5, 2018:

In favor:

Jianxin Ma

David Eichinger

Norbert Neumeister

Laura Claxton

Bill Hutzal

Stephen Hooser

Charles Ross

Rick Kase

Christian Butzke

Richard Johnson-Sheehan
Alan Friedman

Opposed:
Tom Brush



PURDUE UNIVERSITY SENATE BYLAWS – (EXCERPTS)

See the Senate website (www.purdue.edu/senate/bylaws) for entire document

SEPTEMBER 10, 2018

Purpose and Powers

1.00 Powers of the University Senate

- The University Senate was established by adoption of Executive Council Document 63-3 (1964) by a mail ballot of the University faculty, and approval in principle by the Board of Trustees of Purdue University.
- These Bylaws are designed to implement those documents but not to replace them.
 - **The University Senate is the governing body of the faculty and it exercises the legislative and policy-making powers assigned to the faculty**, subject only to review and check by the faculty by established procedures (Article VI).
 - Therefore, **subject to the authority of the Board of Trustees and in consultation with the President, it has the power and responsibility to propose or to adopt policies, regulations, and procedures intended to achieve the educational objectives** of Purdue University and the general welfare of those involved in these educational processes.

Membership

2.00 Composition

- **The Senate shall be composed of one hundred and two (102) members.**
- The representation of the Senate shall be apportioned as follows:
 - The President of the University.
 - The chief academic officer and the chief fiscal officer
 - The Chairperson and Vice-Chairperson
 - Three members elected by and representing the faculties of the regional campuses
 - One undergraduate student member and one graduate student member
 - The remaining **ninety-two (92) members shall be apportioned among the faculty units according to the number of faculty members attached to the respective faculty unit.**
 - There shall be between six and fifteen designated Advisors to the Senate who shall be accorded full floor privileges but not the vote.

Membership

2.02 – 2.04 Eligibility; Election; Recall

2.02 Eligibility

- **Only members of the voting faculty with professorial rank shall be eligible for election to the Senate.**

2.03 Election of Senators

- A Senator can serve no more than 2 consecutive terms (3 years each) on Senate.
- **Eligible faculty for election to the Purdue University Senate must be tenured, tenure-track or clinical faculty.**
- Deans, Associate Deans, and Assistant Deans may not serve as Senators.
- Election must be by secret ballot (paper or online).
- Units may provide alternates to serve, if an elected Senator is unable to serve temporarily, or to replace a Senator recalled on request of the Senate.

2.04 Recall

- In the case of a Senator who is unduly absent, the Senate may petition the unit concerned to recall the Senator and elect another.

Officers

3.10 – 3.22: Presiding Officer, Chair & Vice Chair, & Duties

3.10 Presiding Officer

- **The presiding officer of the Senate shall be the President of the University or, his/her designee, who normally will be the Chairperson of the Senate. In case both are absent, the Vice Chairperson of the Senate shall preside.**

3.20 Chairperson and Vice Chairperson of the University Senate

- The Chairperson and the Vice Chairperson shall each serve for a term of one year beginning June 1. The Vice Chairperson shall succeed the Chairperson.

3.21 Duties of the Chairperson of the University Senate

- The Chairperson should interpret the views of the University Senate to the president of the University and the Board of Trustees.
- The Chairperson, with the assistance of the Steering Committee, shall have the responsibility for expediting the implementation of the University Senate actions.

3.22 Duties of the Vice Chairperson of the University Senate

- The Vice Chairperson will serve as a member of the Advisory Committee and the Steering Committee.

Secretary of Faulties



Dr. Joe Camp

- Professor, Veterinary Parasitology
- Purdue University, Secretary of Faculties, Office of the Provost

Sergeant at Arms



Ms. Se'Andra Johnson

- Administrative Assistant to Joe Camp (Secretary of Faculties)
- Administrative Assistant to the University Core Curriculum Committee
- Office of the Provost

Meeting

4.00 Meetings

- Regular meetings of the Senate will be held on the third Monday of each month of the academic year September through April, with the following exceptions:
 - The Senate will meet on the second Monday of September and on the fourth Monday of January, and will not meet in December

4.01 Agenda

- **The agenda for a regular meeting of the Senate, as prepared by the Steering Committee,** shall be distributed to members of the Senate at least five days before that meeting

Meeting

4.02 Reports and Documents

- **Normally, all matters brought before the Senate shall be in the form of a numbered report**, if for information, or of a numbered document, if for action.
- **Each proposed action shall be presented in a standard format** which carries a document number, date, subject, and source references, as appropriate, and intended disposition.
 - Committee reports shall list the names of the committee members with an indication of their respective vote.
- In preparing documents for Senate consideration that involve a change of regulations, documents shall clearly show a comparison of the existing and proposed new regulations. **Text changes should be clearly differentiated using: red + italics (+ bold) for all changes and strikethrough for text removal.**
- **All documents which are to be submitted to the Senate shall be submitted to the Steering Committee for agenda assignment.**

Senate Document 16-08
20 February 2017

TO: The University Senate
FROM: Natalie Carroll & Michael Hill, Co-Chairs of the Nominating Committee
SUBJECT: Bylaws of the University Senate
DISPOSITION: University Senate for Discussion and Adoption
RATIONALE: Recent questions to the Nominating Committee suggest that changes to the Bylaws would clarify policy:
• Two-term limit for a Senator serving as a replacement (while a Senator is on sabbatical, for example)
• Eligibility for service as Senate Vice-Chair and Chair
We would also like to specify that elections of Senators take place via secret ballot.

Current Bylaws text with recommended changes in red/strikethrough:

2.03 Election of Senators

The normal term of an elected Senator shall be three years, beginning on the June 1 following his/her election. A Senator can serve no more than two consecutive terms (3 years each) on the Senate. ~~When a Senator serves for another faculty member (as in the case of a sabbatical absence) for one or two semesters, the Senate service will not affect their ability to serve two consecutive terms (3 years each). It will be considered a term of service, however, if a Senator serves on the Senate for three semesters, or more, for another faculty member.~~

In the event a Senator does not complete his or her term, a replacement Senator shall be elected for the remainder of the original term. After reapportionment of the Senate in November, the individual faculties (see Section 2.00 b 6) will complete the election of Senators who are to assume office on the coming June 1, and report the results to the Secretary of the Senate by February 1. ~~The individual faculties will set up their own methods for nomination and election of senators.~~ Senator nominations may be made by a faculty member themselves or by a colleague, with the agreement of the nominee. Eligible faculty for election to the Purdue University Senate must be tenured, tenure track, or clinical. Deans, Associate Deans, and Assistant Deans may not serve as Senators. Election must be by secret ballot (paper or online). Faculty units may provide alternates to serve, if an elected Senator is unable to serve temporarily, or to replace a Senator recalled on request of the Senate.

3.20 Chairperson and Vice Chairperson of the University Senate

b) ~~At the regular February meeting of the University Senate the Nominating Committee shall nominate at least two members of the University Senate for the office of Vice Chairperson. Additional nominations shall be accepted from the floor at any time before the election. Nominees must be elected Senators and members of the voting faculty with professorial rank.~~

Submitted by Nominating

Voted for:
Natalie Carroll
Richard Cosier
Ji-Xin Cheng
Julie Mariga
Sulma Mohammed
Loring Nies
Bob Nowack
James Mark Thom

Senate Document 18-xx
Date (Joe will add)

TO: The University Senate
FROM: Committee / Other (see Bylaws)
SUBJECT: Subject
DISPOSITION: University Senate for Discussion and Adoption
REFERENCE: example: University Senate Bylaws, 2.03
optional items:
PROPOSAL: Succinct description of the proposed action
RATIONALE: Brief Explanation of the need for the action

Current	Proposed
<i>insert current text</i>	<i>Insert new text with actual changes in red + bold italics (as appropriate)</i>

Committee Votes
For:

Against:

Senate Document 18-xx
Date
(Joe will insert the document # and date)

TO: The University Senate
FROM: Committee / Other (see Bylaws)
SUBJECT: Subject
DISPOSITION: University Senate for Discussion and Adoption
REFERENCE: example: University Senate Bylaws, 2.03
optional items:
PROPOSAL: Succinct description of the proposed action
RATIONALE: Brief Explanation of the need for the action

Committee Votes
For:

Against:

Example Documents – templates available on the Senate website, Items Under Consideration

Meeting

4.02 Reports and Documents

- **Documents will be introduced to the Senate on the agenda of a regular meeting with the designation “for discussion.”**
 - **Amendments to the document may be proposed and discussed, but final action on the document and any amendments will normally await its appearance on the agenda for the next regular meeting of the senate, marked “for action.”**
 - When a document appearing on the agenda marked “for discussion” or an item introduced as new business is acceptable without amendment, it may be adopted without delay, after a suspension of the rules by consent or by a two-thirds majority of those present and voting, by a two-thirds majority affirmative vote.

Meeting

4.02 Reports and Documents

- When a document appearing on the agenda marked “for discussion” or an item introduced as new business is considered to be of **sufficient urgency to warrant full consideration and action without the customary delay, it may, after the adoption of a motion to suspend the rules, be amended by a two-thirds majority and/or adopted at that meeting by a two-thirds majority vote.**
- Documents submitted by the Nominating Committee placing names in nomination constitute an exception. Such documents shall be placed on the agenda, marked “for action” in the first instance and shall be acted upon as specified in Section 5.02 of these bylaws.
- A faculty committee Chairperson may request the Senate to postpone action contemplated on matters which fall within the purview of that committee.

Meeting

4.03 & 4.04 Voting & Advice of Faculty

- **Decisions of the Senate shall be determined by a majority vote of those Senators present and voting, unless contrary requirements are specified elsewhere in these Bylaws or in the University Code.**
- By a two-thirds vote of those Senators present, the Senate may seek the advice and counsel of the faculty on any issue through a mail ballot.

4.05 Attendance at Meetings

- Meetings of the Senate normally will be open to all faculty members, as observers, and to other persons invited to attend by the Steering Committee or the presiding officer.

Meeting

4.07 Quorum

- **Fifty-one members of the Senate shall constitute a quorum.**
- **No substitute shall be permitted to serve during the absence of a senator.**
- The presence of a quorum shall be determined by the sergeant at arms at the beginning of each meeting, and at other times at the request of the presiding officer.

Senate Committees

5.00 Senate Committee Authority and Responsibility

- **A majority or tie vote among the Senate members shall be sufficient to carry any issue.**
- **Advisors and student members shall have full voice and vote on all matters, except for personnel selection, for the purpose of advising the committee, and the Senate.**

5.03 Chairpersons of Senate Committees

- **Prior to June 1, each Senate committee shall hold a preliminary meeting of members as of June 1, and elect a Chairperson for a one-year term starting June 1.**
- **The Chairperson shall be a Senator and may serve successive terms.**
- **Each such committee shall inform the Secretary of the Senate and the Chairperson of the Senate the name of its elected committee Chairperson for the coming year.**

Senate Committees

5.05 Relationship of Senate Committees to Councils and University Committees

- **Each Senate committee is authorized to deal directly with all councils and University committees in its area of responsibility and to work with them in preparing policy proposals, and shall transmit such proposals to the University Senate together with whatever recommendations it might offer.**
- The Chairperson of each Senate committee is responsible for seeing that each council or University committee in its area of responsibility has organized itself appropriately for the conduct of its business including selection of its Chairperson, transmits minutes of its meeting to the Senate committee, and reports annually to that Senate committee.
- Elections or appointments to all University committees and councils shall be accomplished in March or April of each year for terms of service which shall begin on June 1.

Senate Committees

5.06 Reporting of Councils and University Committees

- Each council and University committee, following each meeting held, will forward minutes to its designated Senate committee and annually report its activities. It should work with the designated Senate committee in the preparation of proposals involving policy changes or other matters which require Senate action.

5.10 The Steering

- Steering Committee shall consist of twelve members: the President of the University, the Chairperson of the Senate, the Vice Chairperson of the senate, the Secretary of the Senate who shall serve without vote, and eight additional senators.



Chair: Professor Shively

Steering Committee Duties and Responsibility

5.11 Duties and Responsibilities

- **Receive communications from any faculty member or group of members who wish to present any proposal before any meeting of the Senate.** They will:
 - Place such a proposal on the agenda of an upcoming Senate meeting
 - Refer the proposal to one (or more) Standing or Faculty committee for study

- **The Steering Committee shall serve to coordinate the activities of the Senate committees on common, related, or interdependent matters.**
 - Refer to the appropriate Senate committee matters of overall interest to the University or to the Senate
 - Request Senate committees to make studies and reports on subjects of concern to the University Senate.
 - Refer any problem of overall concern to the appropriate Senate committee, upon a request by the President, and shall report its recommendations to the president.

Advisory Committee



Chair: Professor Carroll

5.80 *The Advisory Committee*

- **The Advisory Committee shall consist of the president of the University, the chief academic officer of the University, the Chairperson of the Senate, the Vice Chairperson of the Senate, the past Chairperson of the senate, the secretary of the Senate, the several chairpersons of the Senate to provide at least one representative from each faculty unit.**
 - And, representatives from APSAC, CSSAC, PSG, and PGSG
- The Advisory Committee shall meet on call of the Chairperson of the Senate, the President, the Board of Trustees, or at the request of any three members of the committee, to advise regarding any matter of concern to the faculty.

Educational Policy Committee (EPC)



Chair: Professor Harris

5.60 *The Educational Policy Committee*

- The Educational Policy Committee shall consist of thirteen Senators, three Advisors, three students (two undergraduates; one graduate), and *ex-officio* members as deemed appropriate by the EPC.
- **The Educational Policy Committee shall be concerned with, but not limited to:**
 - Improvement of instruction
 - Grades and grading
 - Scholastic probation
 - Dismissal for academic reasons and reinstatement
 - Standards for admission
 - Academic placement
 - The academic calendar
 - Policies for scheduling classes
 - Honors programs general educational policy
 - General research policies
 - Military training programs
 - General curriculum standards
 - Coordination of campus and extension curricula
 - General academic organization
 - Interdepartmental and inter-institutional research and education programs

Equity and Diversity Committee



Chair: Professor Ruple

5.30 *The Equity and Diversity Committee (EDC)*

- The Equity and Diversity Committee shall consist of 13 Senators, 3 advisors, and 3 students (two undergraduate students and one graduate student).
- Two established *ex-officio* members shall be the Provost of the University or designee and the Vice Provost for Faculty Affairs. Additional *ex-officio* members shall be invited as deemed appropriate by the EDC.
- The Purdue Student Government shall recommend the undergraduate students and the Purdue Graduate Student Government shall recommend the graduate student. Each student so chosen shall serve for a term of one year.
- **The Senate's Equity and Diversity Committee shall provide guidance in all aspects of climate, recruitment, retention, inclusion, and equal opportunities for access and success.**

Equity and Diversity Committee (EDC)

The duties of the EDC are to:

- Pro-actively engage with other university units, department and/or organizations to promote a climate of inclusion.
- Seek to increase cultural awareness, respect and inclusion of all groups—including traditionally underrepresented groups based on cultural, ethnic, language, gender, and/or sexual orientation status and all others noted in Purdue’s nondiscrimination policy.
- Review Purdue University’s programs for the recruitment and retention of faculty, staff, and students.
- Advise the Senate regarding issues of prohibited discrimination, equal opportunity, outreach and related matters.
- Initiate joint explorations and investigations with other Senate Standing Committees to ensure diversity and equity issues are integrated throughout Senate deliberations.
- Encourage diverse representation of multiple perspectives across Senate and other university committees.

Faculty Affairs Committee



Chair: Professor Nichols

5.50 The Faculty Affairs Committee

- The Faculty Affairs Committee shall consist of thirteen senators and two advisors.
- The Faculty Affairs Committee shall be concerned with those **matters which pertain primarily to the responsibilities, rights, privileges, opportunities, and welfare of the faculty, collectively and as individuals.**
- **Such items include:**
 - Tenure
 - Procedures for academic promotions
 - Orientation of new faculty members
 - Insurance and health program planning
 - Academic responsibilities
 - Standards of appointment

Nominating Committee



Chair: Professor Berry

5.20 *The Nominating Committee*

- The Nominating Committee shall consist of nine senators.
- The duties of the Nominating Committee are to:
 - **Nominate elective members for all Senate committees**
 - **Nominate members**, after consultation with the appropriate Senate committee, to the **various faculty committees.**
 - Nominees to the Faculty Committee on Censure and Dismissal Proceedings and the University Grade Appeals Committee shall be presented to the Senate for election, such election to constitute final approval.
 - Solicit from the faculty information concerning faculty preferences and qualifications for committee assignments.

Student Affairs Committee (SAC)



Chair: Professor Clifton

5.40 The Student Affairs Committee

- The Student Affairs Committee shall consist of thirteen senators and three advisors. Six student members are also to serve on the committee, five undergraduate students selected by the Purdue Student Government and one graduate student selected by the Purdue Graduate Student Government.
- **The Student Affairs Committee shall be concerned with matters having to do with the general social, cultural, and practical welfare of all students of the University.**

Student Affairs Committee

Specific non-classroom matters of concern to this committee shall include, but not be limited to:

- University placement service
- Intercollegiate athletics
- Counseling
- Scholarships & loans
- Conduct and discipline
- Health
- Living conditions
- Student political activities and organizations
- Student Government actions and recommendations
- Extracurricular activities
- Provision of equal rights and opportunities,
- Any other matters which would enhance the university environment of the student for learning and living.

University Resources Policy Committee (URPC)




Chair: Professor Neal


5.70 The University Resources Policy Committee


- The University Resources Policy Committee shall consist of thirteen senators, two advisors and three students (two undergraduates; one graduate). The Purdue Student Government shall recommend the undergraduate students and the Purdue Graduate Student Government shall recommend the graduate student. Each student so elected shall serve for a term of one year.
- **The University Resources Policy Committee shall be concerned with, but not limited, to, consideration of the following matters:**
 - Planning optimal utilization of the physical facilities of the University, including buildings, the library, scientific and other equipment and educational aids
 - Studies of staff needs, utilization, and planning
 - Interdepartmental cooperation of improved facilities and staff utilization
 - Nonacademic planning, including architecture, landscaping, parking, and traffic




Calendar,
Agenda,
Minutes and
Documents


Sign-up


Archives


Senate
Members

Bylaws

FAQs

WELCOME TO THE UNIVERSITY SENATE

The Purdue University Senate is the governing body of the Purdue faculty. Purdue University Senate exercises the legislative and policy-making powers assigned to the faculty. Subject only to review and check by the faculty by established procedures. Subject to the authority of the Board of Trustees, and in consultation with the president: has the power and responsibility to propose or to adopt policies, regulations, and procedures intended to achieve the educational objectives of Purdue University and the general welfare of those involved in these educational processes.

University Senate Leadership

www.purdue.edu/senate/
(Bylaws: www.purdue.edu/senate/bylaws)



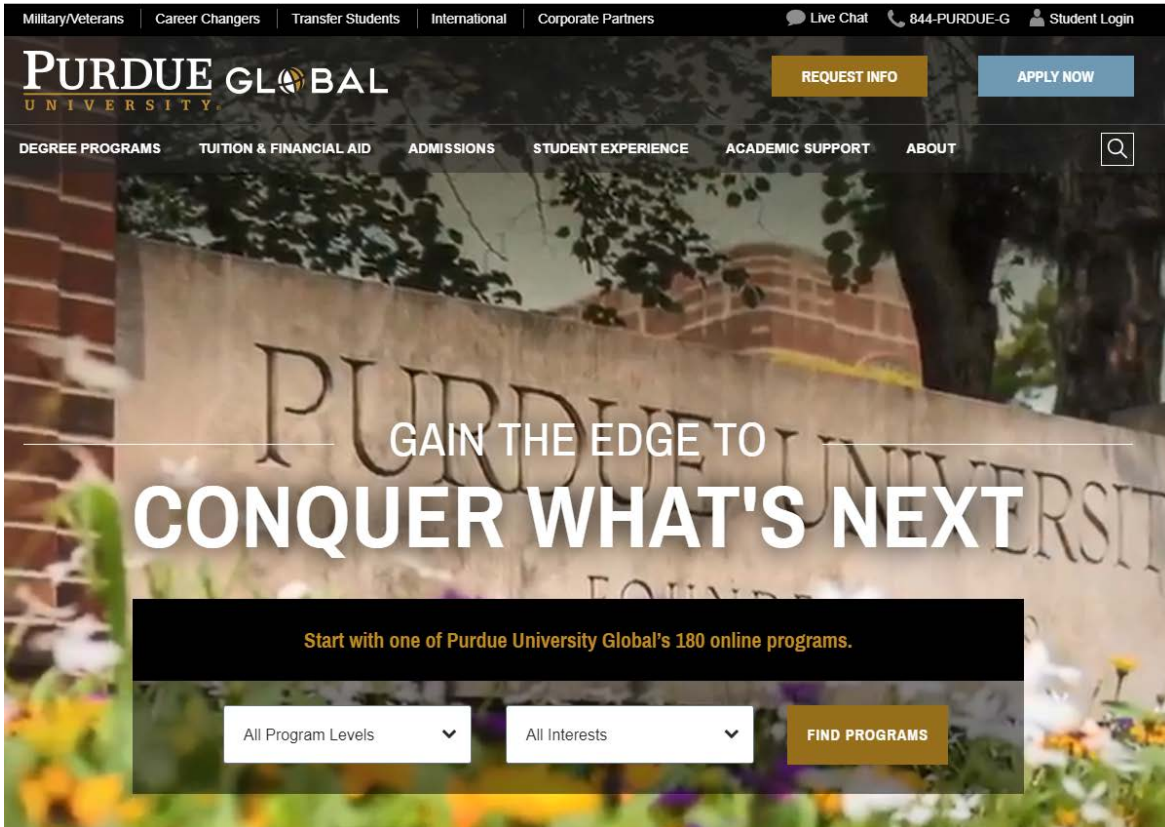
THANK YOU

Excerpts from the University Senate Bylaws

WE ARE PURDUE. WHAT WE MAKE MOVES THE WORLD FORWARD.®

PURDUE
UNIVERSITY.®

Purdue Global Senate Resolution



Purdue University Global Senate Resolution

- Received after the Board of Trustees meeting in June, 2018.
- Delivered by Purdue Global Provost David Starnes.

WEBSITE: www.purdueglobal.edu/

Policies and processes: www.purdueglobal.edu/about/facts-processes/

PURDUE
UNIVERSITY



Senate Date and Action: Wednesday, June 06, 2018
To: Purdue University Faculty Senate
From: Purdue University Global Faculty Senate
Subject: Resolution on Purdue Global Joining the Purdue System

RESOLUTION OF THE PURDUE UNIVERSITY GLOBAL FACULTY SENATE

WHEREAS, the Purdue University Global Faculty Senate has joined the Purdue University System and commits to collaborate with and support the Purdue University Senate in the achievement of the educational objectives set by the Purdue University System and in the furtherance of the general welfare of the educational process; and

WHEREAS, the Purdue University Global Faculty Senate seeks to foster progress and success in expanding access to higher education that strengthens student academic achievement and the value of lifelong learning by intellectual curiosity, creative and critical thinking, and awareness of culture and diversity;

NOW, THEREFORE, IT IS HEREBY RESOLVED by the Purdue University Global Faculty Senate that it commits to:

Encouraging faculty to maintain a commitment to their own professional development and scholarship in their respective disciplines as well as to the broader area of education through developing professional attitudes, values, skills, and strategies that enhance potential success;

Providing general education in a student-centered approach that supports scholarship in a practical environment and prepares students in employment goals and opportunities;

Ensuring integrity and respect of peers and the community where thoughts and experiences are valued by promoting an environment that listens and is willing to seek and achieve solutions, opportunities and common goals; and

Promoting continuous improvement and innovation by adding value to all educational operations and services in the Purdue University system.

RESOLUTION OF THE PURDUE UNIVERSITY GLOBAL FACULTY SENATE

Whereas, the Purdue University Global Faculty Senate has joined the Purdue University System and commits to collaborate with and support the Purdue University Senate in the achievement of the educational objectives set by the Purdue University System and in the furtherance of the general welfare of the educational process; and

Whereas, the Purdue University Global Faculty Senate seeks to foster progress and success in expanding access to higher education that strengthen student academic achievement and the value of lifelong learning by intellectual curiosity, creative and critical thinking, and awareness of culture and diversity:

Purdue University Global

Purdue University Global

Faculty Senate Resolution

NOW, THEREFORE, IT IS HEREBY RESOLVED by the Purdue University Global Faculty Senate that it commits to:

Encouraging faculty to maintain a commitment to their own professional development and scholarship in their respective disciplines as well as to the broader area of education through developing professional attitudes, values, skills, and strategies that enhance potential success;

Providing general education in a student-centered approach that supports scholarship in a practical environment and prepares students in employment goals and opportunities;

Ensuring integrity and respect of peers and the community where thoughts and experiences are valued by promoting an environment that listens and is willing to seek and achieve solutions, opportunities and common goals; and

Promoting continuous improvement and innovation by adding value to all educational operations and services in the Purdue University system.

Congratulations to President Daniels

Recipient of the

2018 Philip Merrill Award for Outstanding Contributions to Liberal Arts Education

from The American Council of Trustees and Alumni (ACTA)

Note in the Chronicle of Higher Education:

ACTA is proud to present the 14th annual Philip Merrill Award for Outstanding Contributions to Liberal Arts Education to Mitchell E. Daniels, president of Purdue University and former governor of Indiana, for his ardent defense of free speech on campus and his innovative leadership in demonstrating how a great university can simultaneously lower costs, widen access, and strengthen teaching and learning.

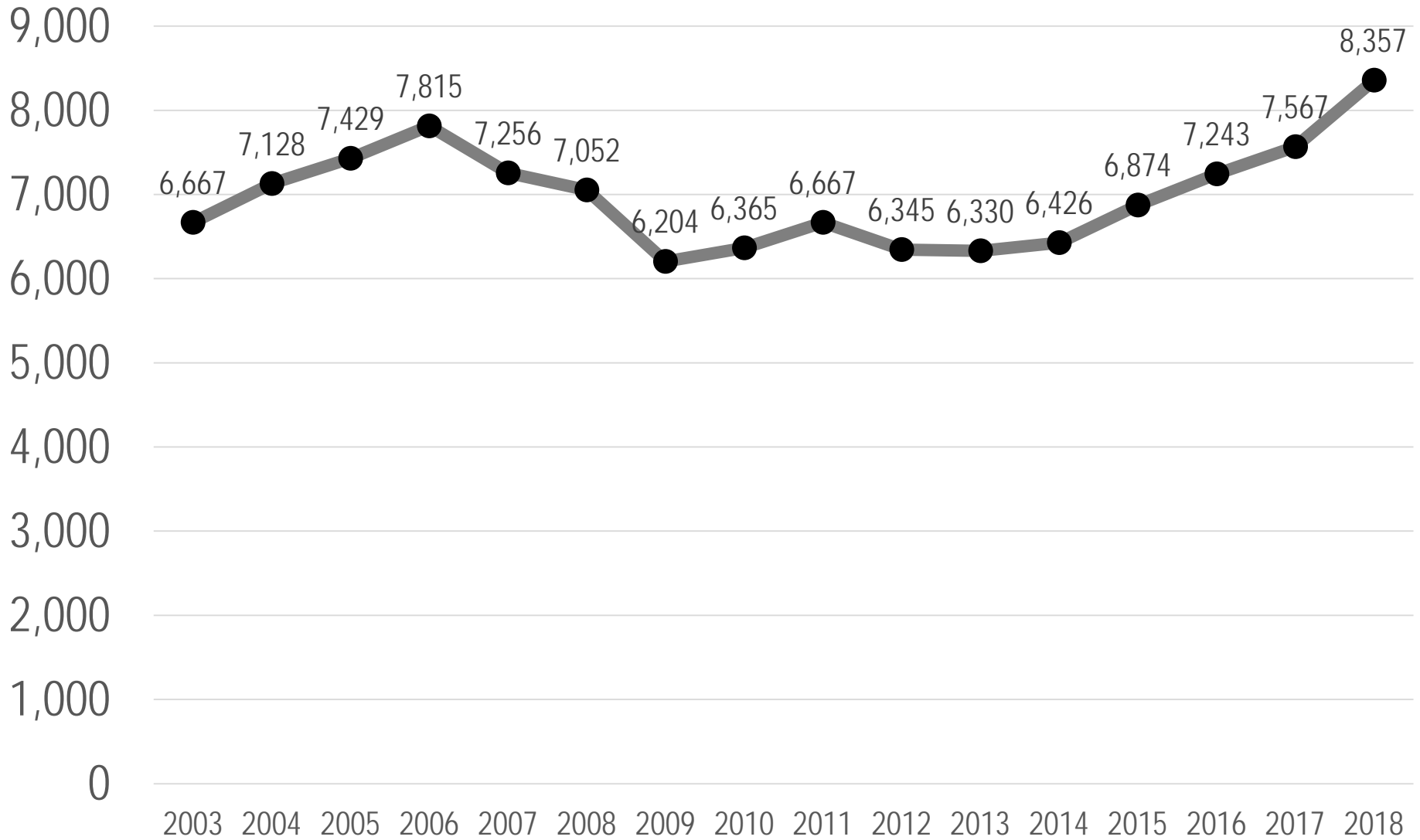
The award will be presented in Washington, D.C. on October 12, 2018

University Senate

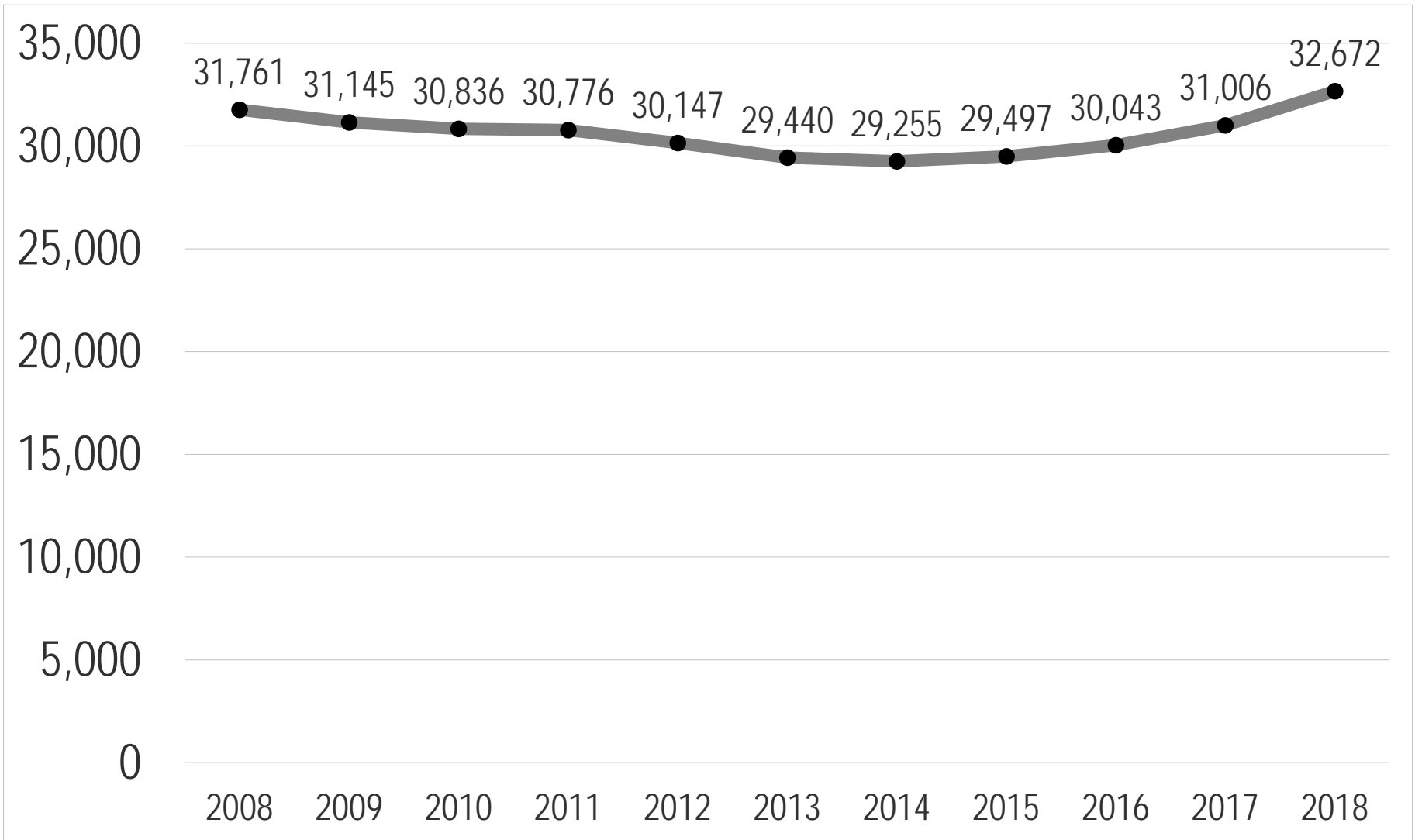
September 10, 2018



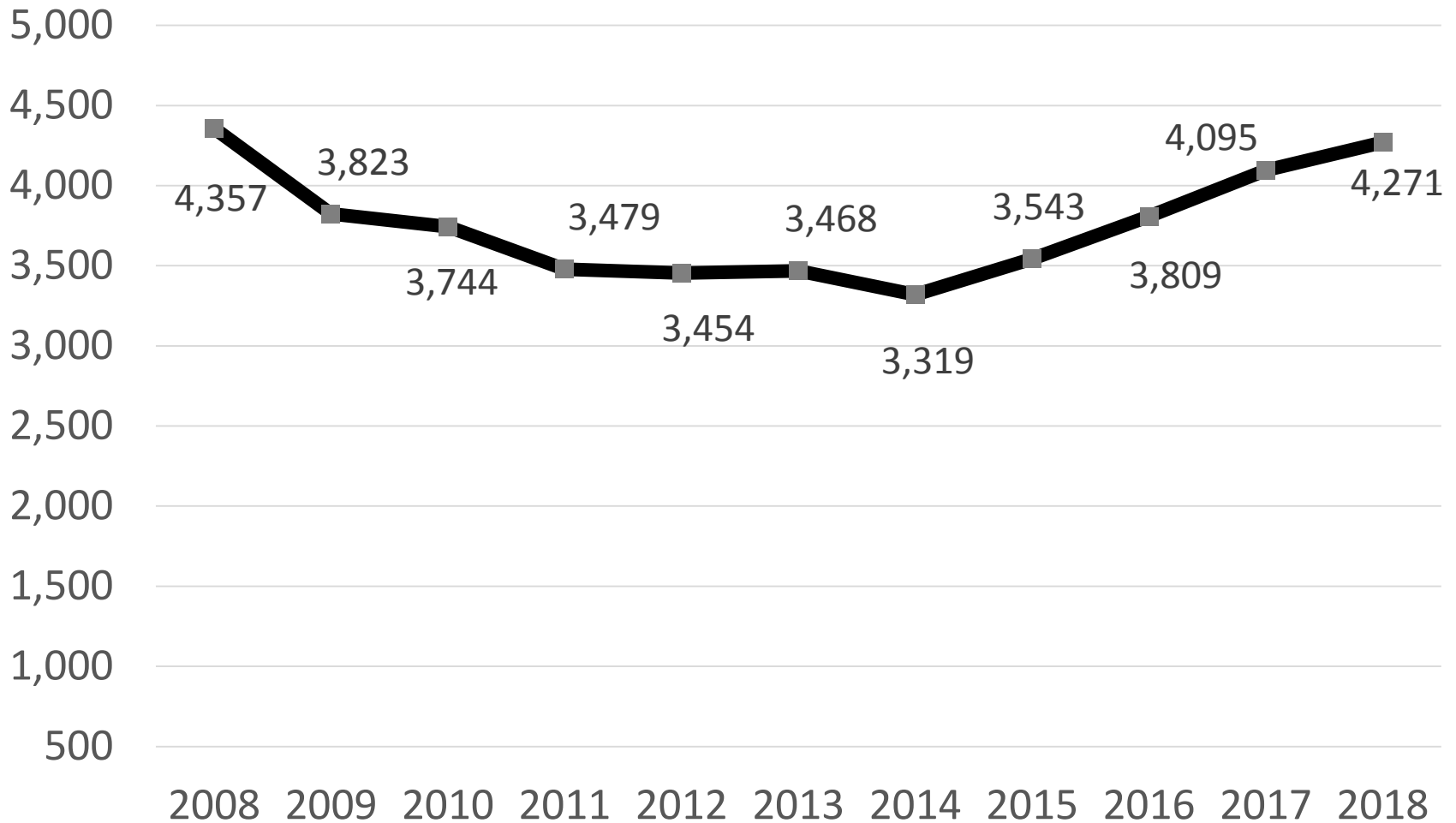
FRESHMAN ENROLLMENT



TOTAL UNDERGRADUATE ENROLLMENT

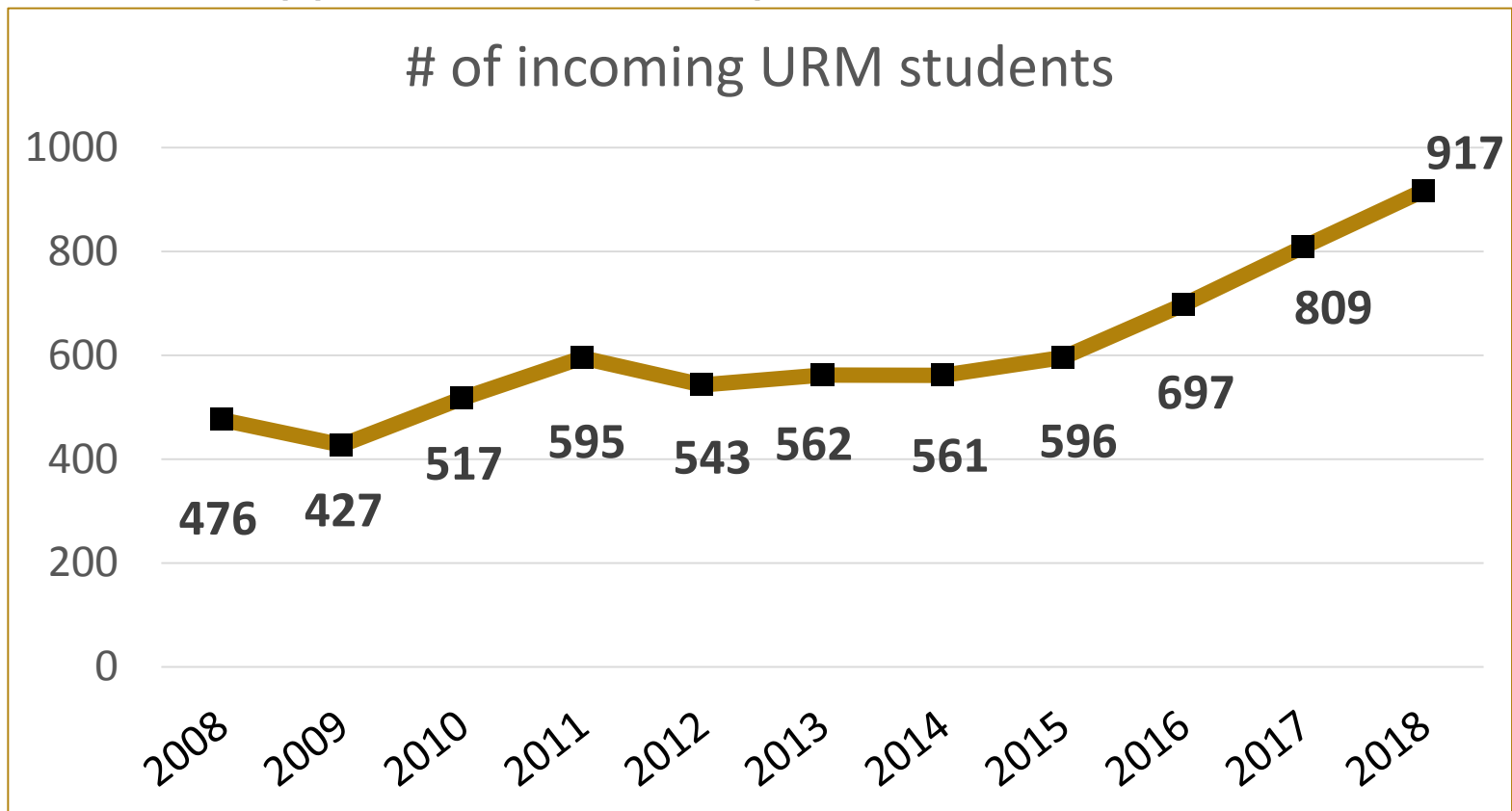


INDIANA ENROLLMENT -- FRESHMEN



FRESHMAN UNDERREPRESENTED MINORITIES

- Exceeded last year's record for most diverse class in Purdue history by far
- URM applications were up 100% vs 2012

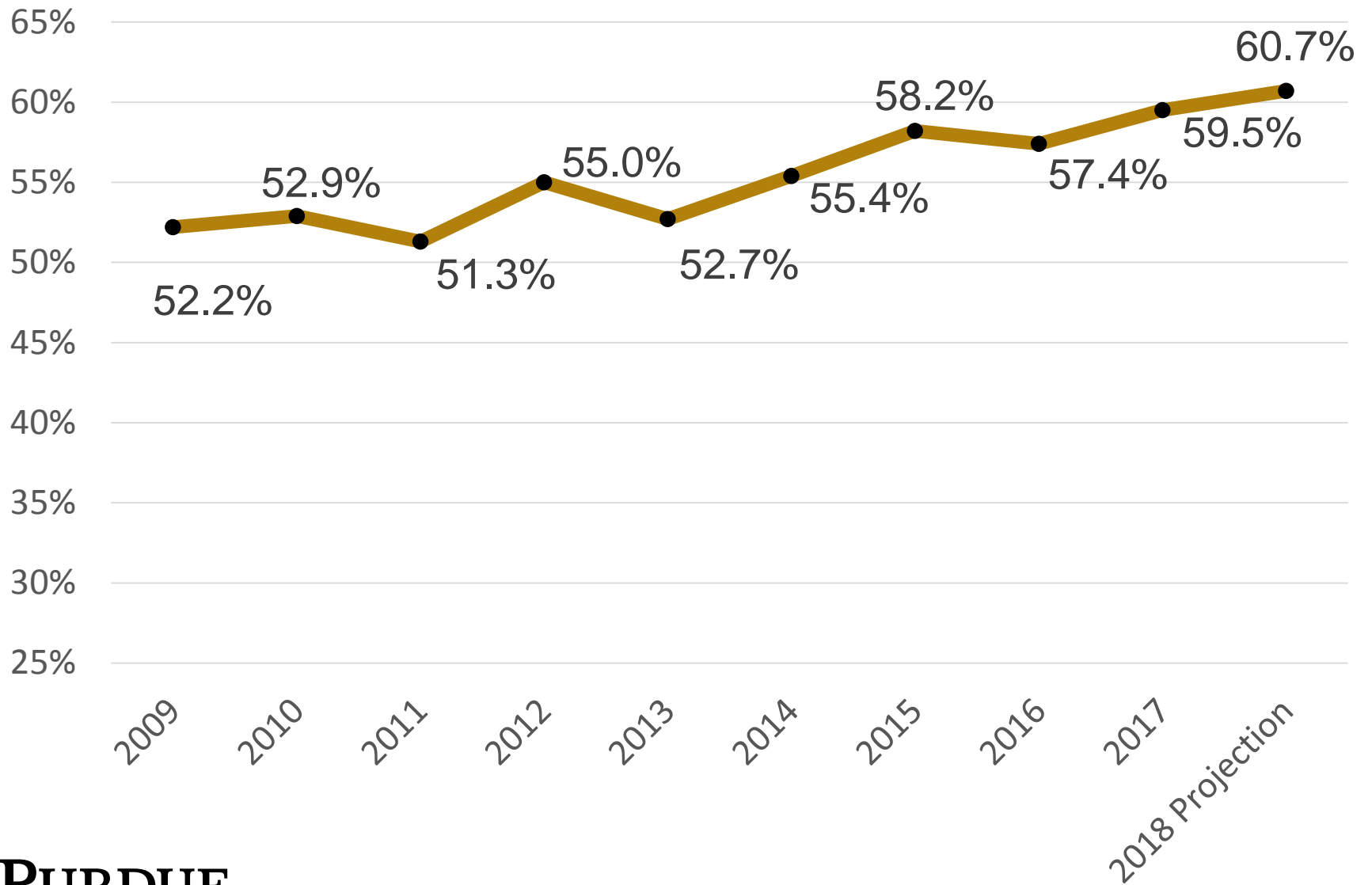


ACADEMICALLY PREPARED

- **ACT:** 2017: 28.1 2018: 28.4 (36 scale)
- **SAT:** 2017: 1256 2018: 1289 (1600 scale)
- **GPA:** 2017: 3.75 2018: 3.66 (4.0 scale)



% OF FRESHMEN IN STEM

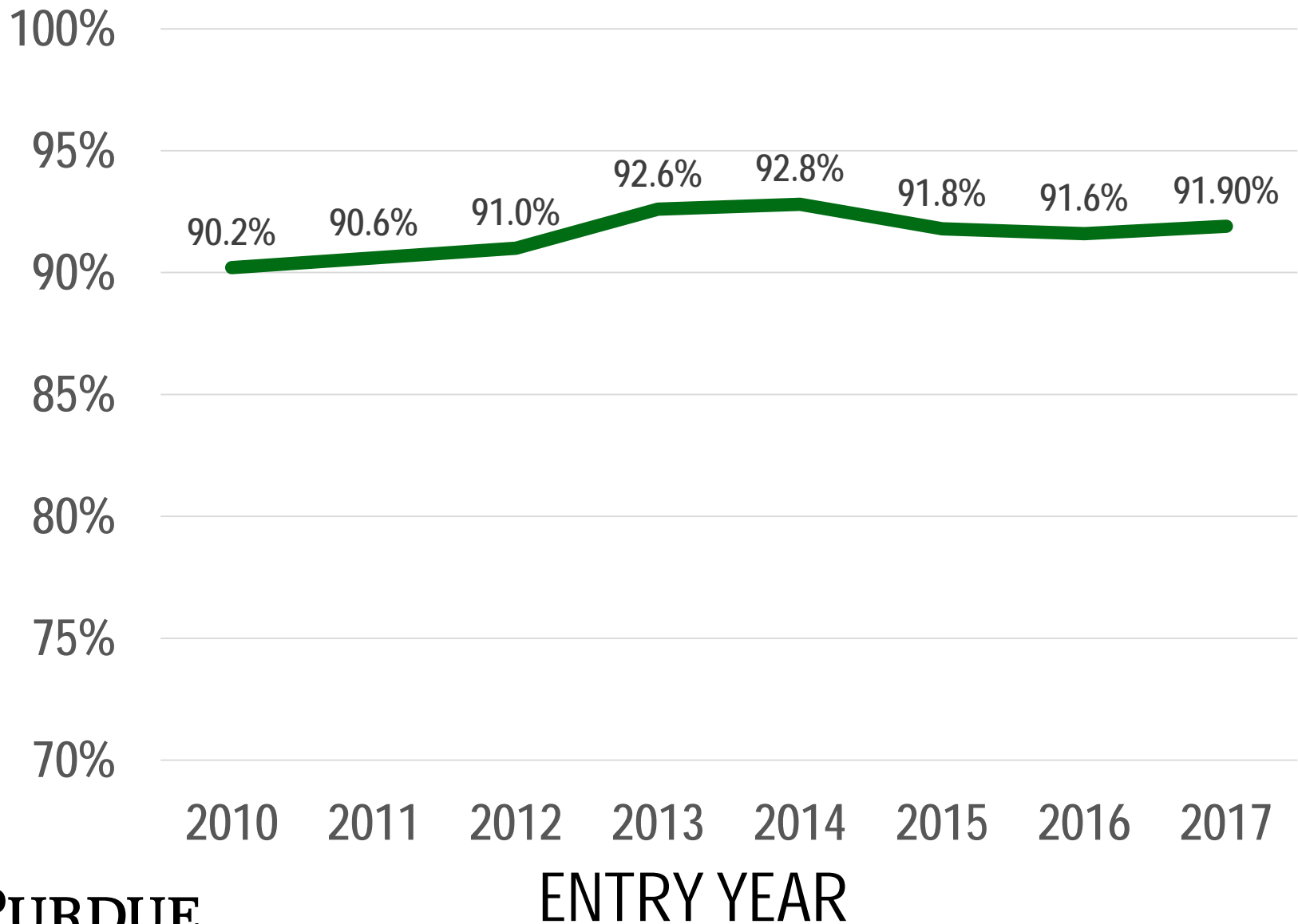


UNDERGRADUATE SUMMER GROWTH

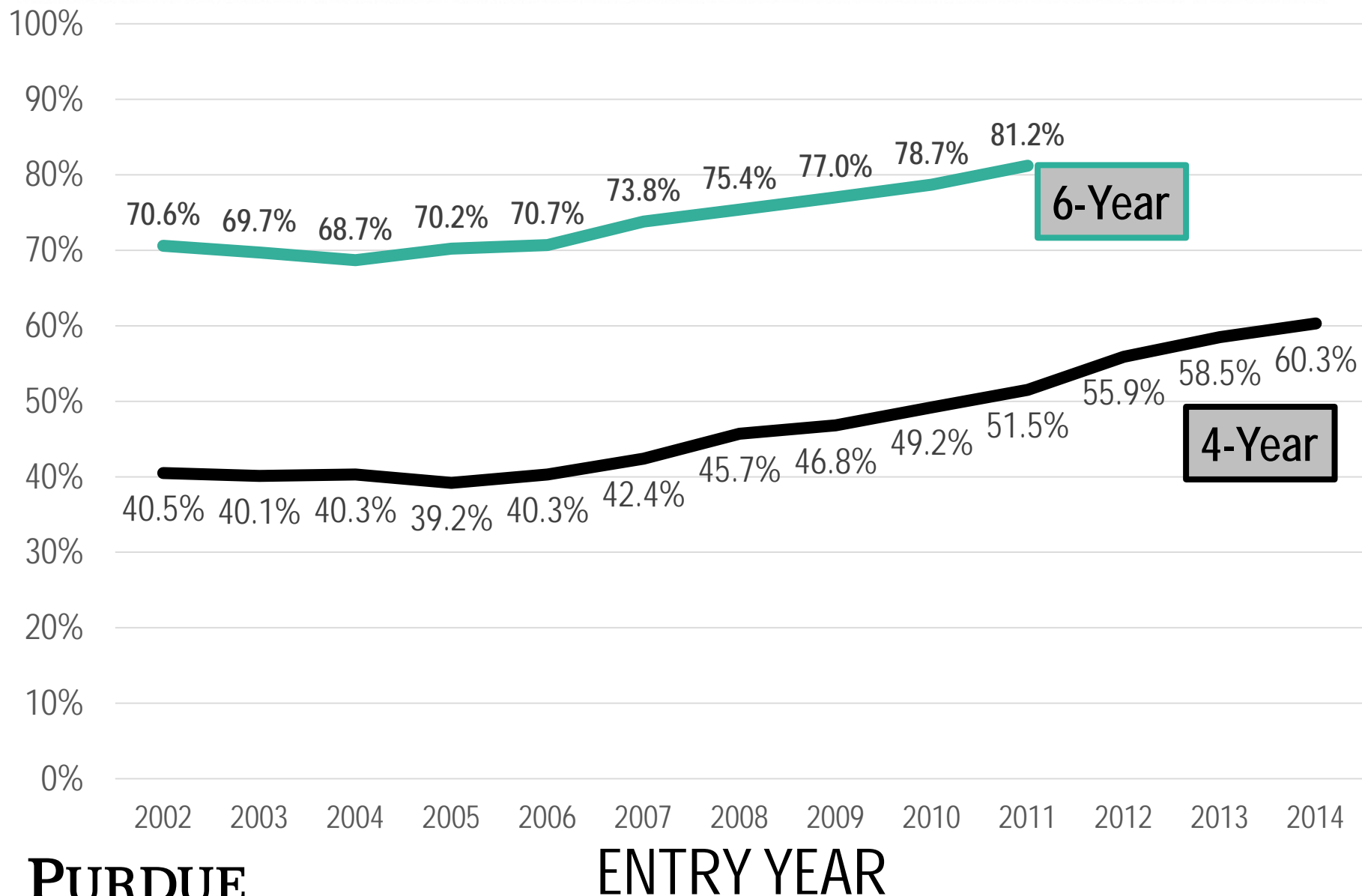
Year	Enrollment	Annual Growth
Summer 11	6,541	
Summer 12	6,666	1.91%
Summer 13	7,027	5.42%
Summer 14	7,905	12.50%
Summer 15	8,329	5.36%
Summer 16	8,698	4.43%
Summer 17	9,059	4.15%
Summer 18	9,698	7.05%






1ST YEAR RETENTION RATES



GRADUATION RATES

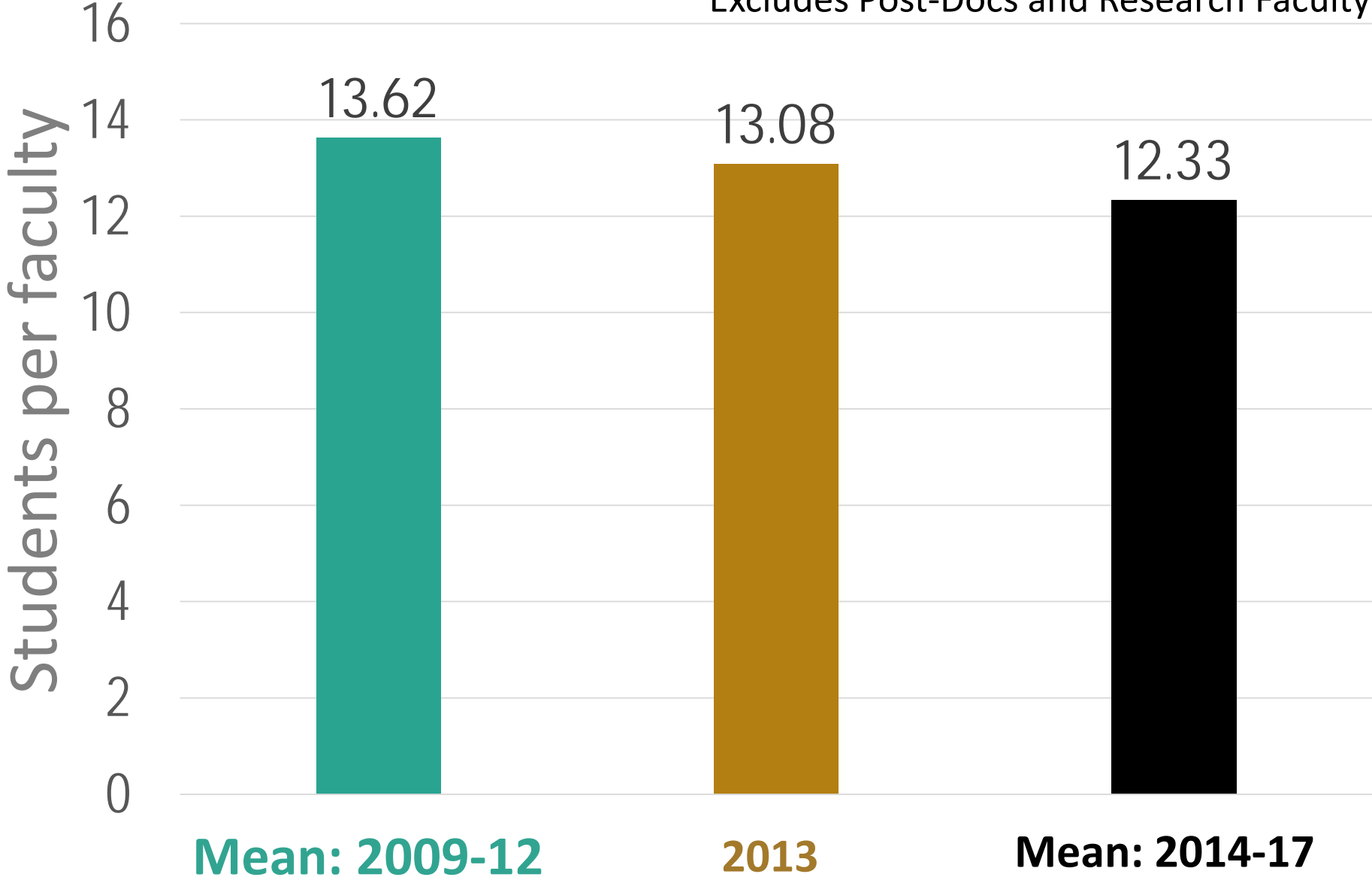


AFFORDABILITY RECORDS & TRENDS

Affordability	2013	2014	2015	2016	2017	2018	2019	Trend
Total Loan Volume \$38M Less vs. 2013 <i>In Millions</i>	\$164	\$144	\$131	\$128	\$126	TBD	TBD	
Debt Per Undergraduate	\$5,047	\$4,555	\$4,166	\$3,988	\$3,881	TBD	TBD	
Room and Board Big Ten Cost Ranking 1 = Most Expensive	2	3	9	11	11	12	14	2nd most expensive to most affordable
Cost of Attendance Cheaper Today	\$23,468	\$23,242	\$23,002	\$23,032	\$23,032	\$22,812	TBD	

FACULTY GROWTH OUTPACED STUDENT ENROLLMENT GROWTH

Excludes Post-Docs and Research Faculty



NO. 4 VALUE RANKING

THE WALL STREET JOURNAL.

Which Colleges Give You the Best Value in WSJ/THE Rankings

For the first time, the WSJ/THE College Rankings look at institutions that offer the most bang for the buck

By *Melissa Korn*

Sept. 5, 2018 7:01 p.m. ET

Harvard University, the Massachusetts Institute of Technology and Yale University rank as the best schools in the nation.

But in terms of value for the money, Berea College, the University of North Carolina at Chapel Hill and the University of Washington, Seattle top the list. **Purdue University**, in West Lafayette, Ind., and the University of California, Los Angeles round out the top five, with Harvard coming in sixth.



THE BEST VALUES

The schools among the top 250 overall that provide the best value, based on overall score and average net price

1. Berea College
2. University of North Carolina, Chapel Hill
3. University of Washington, Seattle
4. Purdue University, West Lafayette
5. University of California, Los Angeles
6. Harvard University
7. University of Illinois, Chicago
8. Georgia Institute of Technology
9. Rutgers University, Newark
10. Stanford University

Source: Wall Street Journal/Times Higher Education College Rankings

THE WALL STREET JOURNAL.

TO: University Senate
FROM: Jerry Shively, Chairperson of the Steering Committee
SUBJECT: Résumé of Items under Consideration by the Various Standing Committees

STEERING COMMITTEE

Jerry Shively shivelyg@purdue.edu

ADVISORY COMMITTEE

Natalie Carroll ncarroll@purdue.edu

NOMINATING COMMITTEE

Fredrick Berry berryf@purdue.edu

EDUCATIONAL POLICY COMMITTEE

Michael Harris mtharris@purdue.edu

1. Winter Session Pilot Proposal (Senate Document 17-13)
2. Updated Language to Core Curriculum Appendices (Senate Document 17-15)

EQUITY AND DIVERSITY COMMITTEE

Audrey Ruple aruplec@purdue.edu

1. Sexual Harassment: resolution and off-campus activities
2. Faculty/staff recruitment and retention
3. Freedom of expression
4. Non-welcoming spaces at Purdue
5. Curriculum

FACULTY AFFAIRS COMMITTEE

Deborah Nichols deborahnichols@purdue.edu

1. Honors College representation
2. Allowable reimbursable travel-related expenses
3. Change in continuing term lecturer cap
4. External threats on Purdue faculty
5. Teaching evaluation resolution follow-up
6. Promotion appeal process
7. Benefits issues

STUDENT AFFAIRS COMMITTEE

Christopher Clifton clifton@cs.purdue.edu

1. Policy on extended leaves for students
2. Jury duty absence policy
3. The Graduate Student Bill of Rights and Responsibilities
4. Parental leaves for students
5. In-state tuition for members of Native American tribes from Indiana

UNIVERSITY RESOURCES POLICY COMMITTEE

Jonathan Neal jneal@purdue.edu

1. As an outgrowth of our budgetary openness proposal, working to reinvigorate BIER committee
2. Completed work and voting on a resolution for sustainability strategic plan (with sustainability committee)
3. Considering in state tuition for native tribes original to Indiana (with Student Affairs and EDC)
4. Considering a survey of students, faculty and staff on their space and their perceptions of the quality of different spaces

Chair of the Senate, Natalie Carroll, ncarroll@purdue.edu
 Vice Chair of the Senate, Cheryl Cooky senate-vicechair@purdue.edu
 Secretary of the Senate, Joseph W. Camp, Jr., jcamp@purdue.edu
 University Senate Minutes; <http://www.purdue.edu/senate>

PURDUE ATHLETIC AFFAIRS COMMITTEE

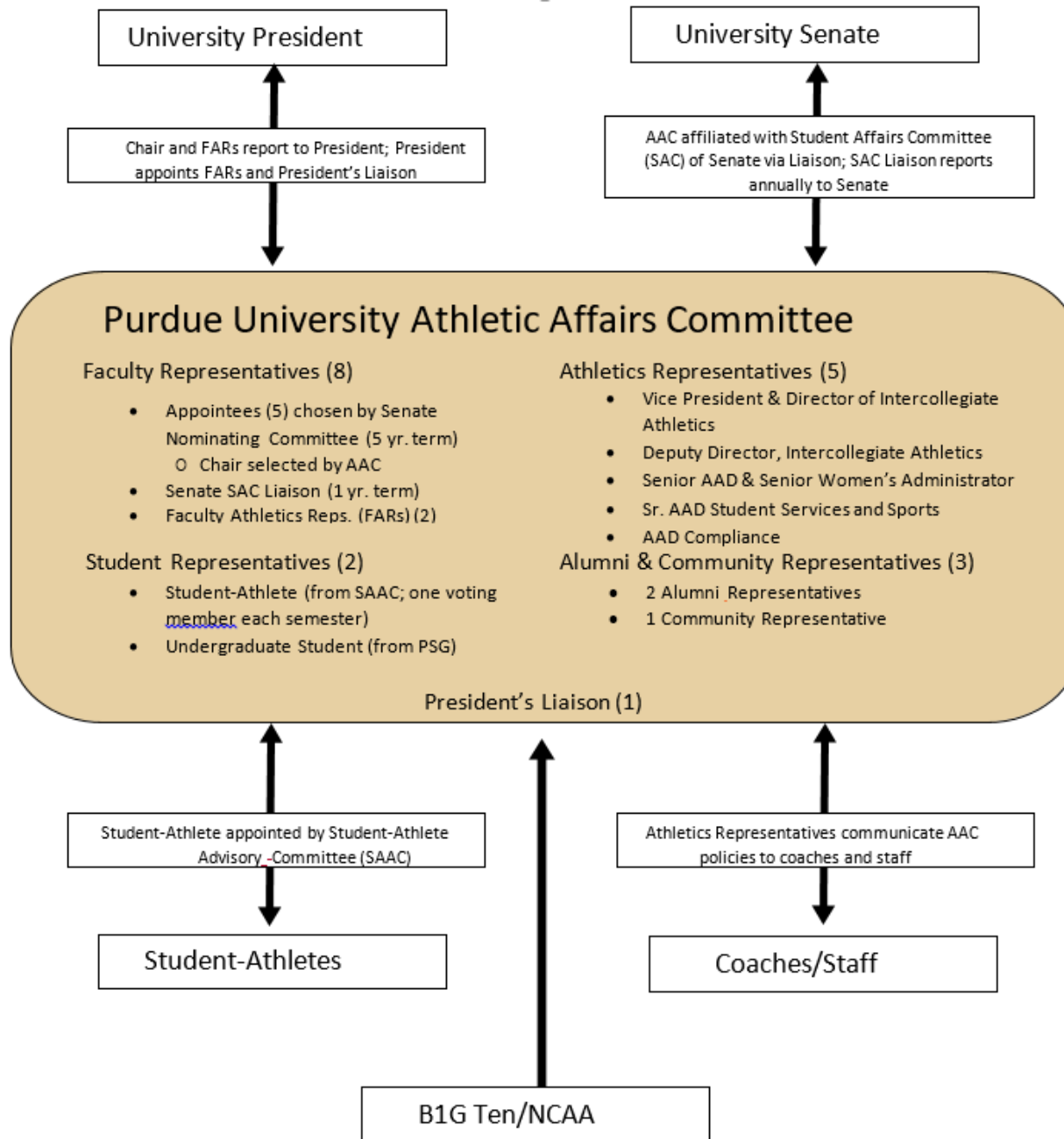
REPORT TO THE UNIVERSITY SENATE

SEPTEMBER 10, 2018

The Athletic Affairs Committee (AAC)

- One facet of institutional control of athletics
- Ties to the beginnings (1895) of what is now known as the Big Ten Conference and the role of the faculty
 - The Presidents of the original member institutions delegated oversight of athletics to the faculty
- Intended to represent the interests of the entire University community
 - Faculty, students, alumni, community representatives, and senior administrators from Intercollegiate Athletics

AAC Linkages



Current Faculty Membership (2018-19)

Faculty members serving on the AAC

- Chair: Joe Camp (Vet)
- Student Affairs Liaison: Jon Story (HHS)
- Senate Appointees:
 - Joe Camp (Vet)
 - Nathan Hartman (PPI)
 - Kathy Abrahamson (HHS)
 - Stacy Holden (CLA)
 - Jessica Huber (HHS)
- Faculty Athletic Representatives
 - Marcy Towns (Science)
 - Phillip VanFossen (Ed)

Connections to the Senate

- Reports to the Student Affairs Standing Committee

Enrollment Data

College or School	Fall 2017	Spring 2018
Agriculture	20	19
Education	11	12
First Yr. Eng.	18	18
Engineering	41	41
HHS	125	119
Liberal Arts	113	99
Management	75	73
Pre-Pharmacy	3	2
Pharmacy	3	4
Science	19	22
Polytechnic Inst.	62	55
Graduate School	9	7
Exploratory Studies	36	28
Veterinary Medicine	1	1

Academic Performance (S18)

	Student-Athletes	Campus
Semester GPA	3.01	3.03
Cumulative GPA	3.08	3.15
GPA \geq 3.0	55.9%	62.8%
Academic Honors	34.1%	39.7%
4.0 GPA	7.74%	9.21%
Placed on Probation	8.58%	7.52%

GPA by Team (S18)

Team	GPA
Baseball	3.01
Football	2.84
Men's Basketball	2.93
Men's Cross Country	3.17
Men's Golf	3.44
Men's Swimming	3.23
Men's Tennis	3.22
Men's Track	2.93
Soccer	3.23
Softball	3.17
Volleyball	3.07
Women's Basketball	3.21
Women's Cross Country	3.47
Women's Golf	3.25
Women's Swimming	3.39
Women's Tennis	3.22
Women's Track	3.18
Wrestling	2.95
Student-Athlete Totals	3.08
Student Body Totals	3.15

Academic Awards

Big Ten Postgraduate Scholarship Recipients

- Hanna House - Women's Swimming and Diving (Science)
- Christian Bals – Men's Swimming and Diving (Accounting, Graduate School)

Big Ten Medal of Honor

- Ashley Evans – Volleyball (Polytechnic Institute)
- Marat Amaltdinov – Men's Swimming and Diving (Finance, Graduate School)

Questions?

TO: The University Senate
FROM: Athletic Affairs Committee
SUBJECT: Athletic Affairs Committee Report to the University Senate, 2017-18 AY
REFERENCES: University Senate Document 90-31, 22 April 1991
DISPOSITION: University Senate for Information

Purdue University's commitment to the academic and social well-being of its student-athletes is focused through the activities of the Athletic Affairs Committee (AAC) and Intercollegiate Athletics (ICA). This report covers the two regular semesters in the year that has passed since the last report from the AAC: the Fall 2017 Semester and the Spring 2018 Semester.

FACULTY OVERSIGHT OF ATHLETICS

Faculty oversight of ICA continues to be exercised through the AAC. The membership of the AAC, listed in *Appendix 1* of this report, includes representation from faculty, an appointed liaison from the Student Affairs Committee of the University Senate, a liaison to the President, alumni, citizens from the local community, Purdue University students, and ICA senior staff. The AAC monitors the academic progress of the student-athletes and the efforts of ICA to provide outstanding opportunities to learn, compete, and develop personally. The AAC was briefed on the academic status of each sport program and received updates on the primary NCAA academic metrics, the Graduation Success Rate and the Academic Progress Rate.

At monthly meetings of the AAC the members hear reports and participate in discussions pertinent to their mandate. All minutes and supporting documents are filed with the University Senate, and thus are readily available for review. The AAC may be asked to study, review and approve changes in Purdue rules and regulations affecting intercollegiate athletics programs, and to formulate positions with regard to legislation pending before the NCAA. The AAC also discusses diverse topics related to Big Ten or NCAA matters, or national news/trends that may affect the status of both university sports programs and the eligibility of student-athletes. A characteristic agenda and a partial list of topics discussed during the current academic year are provided in *Appendix 2*.

The Vice President and Director of Athletics provides additional information related to the strategic plans of the department, including current goals, key progress measures, facilities projects, etc. Elements of the current plan, especially those that pertain to the development and welfare of the students are presented in brief below.

In addition to the AAC meetings, the senior associate athletics director for student services conducts two academic planning meetings each year at which plans and outcomes over a three-year period are discussed. The two faculty athletic representatives (FAR) participate in each meeting, along with members of the senior athletics administrative staff and the athletics student services staff. The purpose of the meetings is to update the FARs on the plans for the academic areas for the next three years. Academic information for the athletics department and for each sports program is reviewed during each meeting. Information from these meetings is conveyed to the AAC as appropriate.

OVERVIEW OF STUDENT -ATHLETE ACADEMIC DATA

Each semester the pattern of student-athlete choice of major, course selection and academic performance is assessed through data reported by the Office of Institutional Effectiveness and compared to comparable data for the remainder of the student body. This report is/will be sent to the President, Provost, Vice-Provost for Learning and Teaching, the Athletic Affairs Committee, FARs and Athletics Director for review. Data for the fall 2017 and spring 2018 is included in Appendix 3.

OVERVIEW OF THE STRATEGIC PLAN FOR INTERCOLLEGIATE ATHLETICS

The Director of Athletics and others from the department often share goals and metrics from the department's strategic plan with the AAC. Some elements of the plan, especially those related to the academic success of the students are reported for the Senate's review. Words in brackets replace personal pronouns that might be misunderstood in the context of this report.

The foundation of the plan lies in the Vision, Mission and Goals of the department.

Vision: A championship-caliber athletics organization that is excellent in all respects and is a consistent member of the “25/85 Club.”

The "25/85 Club" refers to a very small number of elite NCAA Division I institutions that consistently have their teams ranked in the top 25 while graduating their student-athletes at an 85 percent rate as measured by the NCAA Graduation Success Rate (GSR). The GSR is similar to the Federal Graduation Rate, but the yearly cohorts are adjusted as students transfer in or out of the university.

Mission: Developing Champions / Scholars / Citizens

[The department] will engage and inspire all constituencies to support the broader university pursuit of preeminence by attracting and retaining the very best student-athletes, coaches and staff while engaging former student-athletes in an effort to maintain their identity as part of the Purdue athletics family.

The very best [student-athletes] will execute this mission sharing a common set of values – integrity, mutual respect, a belief in hard work and team work, a commitment to inclusiveness – and the courage to lead. They will be the Purdue Athletics’ brand and continue to enhance our reputation while being pleased with every aspect of their experience at the university.

It is expected that [the department] will be a financially self-supporting enterprise that provides the resources for coaches and staff to develop championship programs.

Goals in support of the Departmental Vision and Mission

Athletic

All sports will place in the top 25 nationally. Consistent performance at this level will see us competing for Big Ten and NCAA championships.

[The department] will deliver exceptional support services throughout the athletics department to all student-athletes to ensure they are mentally and physically prepared to absorb the skill development necessary to maximize their potential as students, leaders, and athletes.

Student Athlete Development and Welfare

Student-athletes will maintain a cumulative grade-point average of 3.0 or above each semester while competing to perform at or above the all-campus cumulative grade-point average; all Purdue teams will have a graduation success rate (GSR) equal to or better than sport specific Division I-A GSR while striving to achieve a department-wide GSR of 85 percent or higher.

The athletics academic support services unit operates with a rolling three-year plan. Each year, the athletics academic support services staff reviews and updates the plan to ensure it is meeting the academic needs of the student-athletes and that it helps create the atmosphere and expectation for academic success. The three-year plan provides the opportunity for the staff to modify and update current practices in an organized manner. The three-year plan objectives are reviewed twice a year with both faculty athletic representatives (FARs) and the athletics senior staff to ensure progress is being made. These meetings provide the opportunity for input by the FARs and sport administrators.

Fiscal

All financial resources will be allocated in pursuit of the vision and managed to ensure that [the department recognizes] the expectation to remain self-supporting while providing scholarships, quality academic support services, competitive operating budgets, and comprehensive facilities. Marketing and development plans will be designed and executed to generate revenue.

Equity and Integrity

To promote an atmosphere that upholds and embraces inclusiveness among all constituencies, [the department] will provide champion-caliber participation opportunities that recognize and reinforce gender and ethnic equality for all coaches, staff and student-athletes.

Image

The student-athletes, coaches, and staff will live their shared values as the role models that they are, so that people “experience” Purdue Athletics with respect, admiration, and pride. All decisions will be communicated in a manner to create, project and enhance this strong intercollegiate athletic brand.

Appendix 1: Members of the Athletic Affairs Committee for 2017-18

Natalie Carroll – CHAIR (*University Senate Appointment, Professor of Youth Development/Agricultural Education/Agricultural & Biological Engineering*)

Tony Albrecht (*Alumni Representative*)

Mike Bobinski (*Vice President and Director of Intercollegiate Athletics*)

Jason Butikofer (*Deputy Director of Intercollegiate Athletics*)

Joe Camp (*University Senate Appointment, Secretary of Faculties and Professor of Veterinary Parasitology*)

Brian Carter (*Student Representative*)

Nancy L. Cross (*Senior Woman Administrator & Senior Associate Athletics Director – Sports*)

Cady Farlow (*Student Representative – Women’s Swimming Student-Athlete*)

Nathan Hartman (*University Senate Appointment, Professor of Computer Graphics & Technology*)

Gary Henriott (*Alumni Representative*)

Stacy Holden (*University Senate Appointment, Associate Professor of History*)

Sue Holder (*Community Liaison*)

Ed Howat (*Senior Associate Athletics Director for Student Services – Sports*)

Jessica Huber (*University Senate Appointment, Associate Vice Provost for Faculty Affairs & Professor of Speech, Language, and Hearing Sciences*)

Beth McCuskey (*Presidential Liaison, Vice Provost for Student Life*)

Tom Mitchell (*ex-officio, Associate Athletics Director – Compliance*)

Bijay Stephens (*Student Representative – Men's Track & Field Student-Athlete*)

Jon Story (*Student Affairs Liaison, Professor of Nutritional Physiology*)

Marcy Towns (*Faculty Athletic Representative, Professor of Chemistry*)

Philip VanFossen (*Faculty Athletic Representative, Director & James F. Ackerman Distinguished Professor of Social Studies Education*)

Calvin Williams (*Associate Athletics Director – Sports*)

Appendix 2: A typical agenda for a meeting and representative topics of discussion

**Fourth 2017-2018 Meeting, April 27, 2018
3:30-5:00 p.m. J. NINE CLUB - MACKEY**

- | | |
|---|-----------------------|
| 1. Call to Order | N. Carroll |
| 2. Approval of February 2018 Minutes | Committee |
| 3. Waiver Petitions, Schedule, Approvals | N. Carroll |
| 4. Remarks from the Director | M. Bobinski |
| 5. Remarks from the Sr. Associate AD-Sports | N. Cross |
| Associate AD-Sports | C. Williams |
| Sr. Associate AD-Academics/Sports | E. Howat |
| 6. Compliance Issue of the Month | T. Mitchell |
| 7. Report from the Student Affairs Liaison | J. Story |
| 8. Report from the Student Members | B. Carter/C. Farlow |
| 9. Report from the Faculty Representatives | M. Towns/P. VanFossen |
| 10. Other Business | Committee |
| 11. Adjournment | N. Carroll |

Examples of Topics Discussed at 2017-18 AAC Meetings

Missed class policy for student-athletes – review, revision and adoption

Development of AAC Policies and Procedures Manual

NCAA academic metrics

Involvement of teams and students in community service (see [*Appendix 4*](#) for examples)

Capital Projects; R&R and other facilities issues

Sport competition schedules & review of missed class time

Big Ten and NCAA legislation and reports on meetings

Review of NCAA Progress-Towards-Degree eligibility requirements

Review of the eligibility certification process utilized at Purdue

Topics related to rules compliance

Legalized sports gambling

NCAA Division I men's basketball FBI investigation

Big Ten & NCAA discussions/actions related to student issues

Review of time demands policies and procedures

Review of ICA decadal budget summary report

Appendix 3: Academic Metrics and Enrollment Data by College and Course

Student-Athlete Academic Profile Contrasted to Student Body		
Academic Performance Measures:	Fall 2017	Spring 2018
<u>Cumulative GPA</u>		
Student-athletes	3.04	3.08
All-campus	3.14	3.15
<u>Semester GPA</u>		
Student-athletes	3.03	3.01
All-campus	3.04	3.03
<u>Achievement of Semester GPA of 3.0 or higher</u>		
Student-athletes	56.7% (293)	55.9% (267)
All-campus	62.2%	62.8%
<u>Achievement of Academic Honors</u>		
Student-athletes	30.6% (158)	34.1% (163)
Dean's List and Semester Honors	(95)	(82)
Semester Honors only	(44)	(69)
Dean's List only	(19)	(12)
All-campus	38.0%	39.7%
<u>Achievement of perfect 4.0 Semester GPA</u>		
Student-athletes	4.5% (23)	7.7% (37)
All-campus	7.9%	9.2%
<u>Placement on probation</u>		
Student-athletes	7.9% (41)	8.6% (41)
All-campus	8.1%	7.5%
<u>Dropped from the University</u>		
Student-athletes	0.2% (1)	0.63% (3)
All-campus	0.6%	1.3%

Cumulative Grade Point Average by Team

Fall 2017 - Team	CGPA
Baseball	2.99
Football	2.79
Men's Basketball	2.92
Men's Cross Country	3.12
Men's Golf	3.35
Men's Swimming	3.19
Men's Tennis	3.17
Men's Track	2.93
Soccer	3.31
Softball	3.20
Volleyball	3.05
Women's Basketball	2.99
Women's Cross Country	3.44
Women's Golf	3.25
Women's Swimming	3.35
Women's Tennis	3.18
Women's Track	3.12
Wrestling	2.94
Student-Athlete Totals	3.04
Student Body Totals	3.14

Spring 2018 - Team	CGPA
Baseball	3.01
Football	2.84
Men's Basketball	2.93
Men's Cross Country	3.17
Men's Golf	3.44
Men's Swimming	3.23
Men's Tennis	3.22
Men's Track	2.93
Soccer	3.23
Softball	3.17
Volleyball	3.07
Women's Basketball	3.21
Women's Cross Country	3.47
Women's Golf	3.25
Women's Swimming	3.39
Women's Tennis	3.22
Women's Track	3.18
Wrestling	2.95
Student-Athlete Totals	3.08
Student Body Totals	3.15

NCAA Graduation Success Rate (GSR) Data

The Graduation Success Rate (GSR) serves a purpose similar to the Federal Graduation rate. Both measure graduation within six years for annual cohorts of students. The federal rate does not account for students who transfer from one institution to another and graduate. The GSR does account for these, which provides a more inclusive calculation of academic success.

STUDENT-ATHLETE GRADUATION SUCCESS RATES (GSR)*

Graduation Rates for 2007-2010 Cohorts (Published November 2017)

() Prior Year

	Purdue	NCAA Division I
	-----%	
	--	
Overall	84 (84)	
Baseball	67 (76)	80
Men's Basketball	92 (92)	78
Football (FBS)	81 (81)	76
Men's Golf	92 (78)	87
Men's Swimming	63 (79)	88
Men's Tennis	91 (91)	90
Men's Track/CC	83 (80)	81
Men's Wrestling	67 (60)	77
Women's Basketball	93 (92)	89
Women's Golf	67 (63)	93
Women's Soccer	100 (100)	93
Women's Softball	100 (89)	90
Women's Swimming	100 (95)	94
Women's Tennis	89 (89)	94
Women's Track/CC	89 (96)	89
Women's Volleyball	100 (100)	92

* The GSR permits institutions to subtract student-athletes who leave their institutions prior to graduation as long as the student-athlete would have been academically eligible to compete at Purdue University had he or she remained.

The Academic Progress Rate (APR)

The APR is an NCAA semester-by-semester assessment of academic progress. It is calculated by allocating one point per student for eligibility and one for retention—the two factors that research identifies as the best predictors of graduation. The data are presented on the basis of four-year rolling averages for each team. Teams must achieve an APR score of 930 to avoid NCAA penalties. Teams below 930 are ineligible for NCAA post-season competition and are required to develop and execute an academic improvement plan.

Each player on a roster earns a maximum of two points per term, one for being academically eligible and one returning to the institution. A team's APR is the total points of a team's roster at a given time divided by the total points possible. The number is then multiplied by 1,000. Thus, a raw APR score of 0.930 is reported as 930 and reflects an approximate 50 percent Graduation Success Rate (NCAA website).

PURDUE UNIVERSITY ACADEMIC PROGRESS RATE INSTITUTIONAL REPORT NCAA DIVISION I 2016-2017

	Multiyear APR Rate
Baseball	983
Men's Basketball	965
Men's Cross Country	947
Football	960
Men's Golf	986
Men's Swimming	982
Men's Tennis	991
Men's Track	954
Men's Wrestling	981
Women's Basketball	989
Women's Cross Country	991
Women's Golf	1000
Women's Soccer	989
Women's Softball	969
Women's Swimming	998
Women's Tennis	992
Women's Track	974
Women's Volleyball	1000

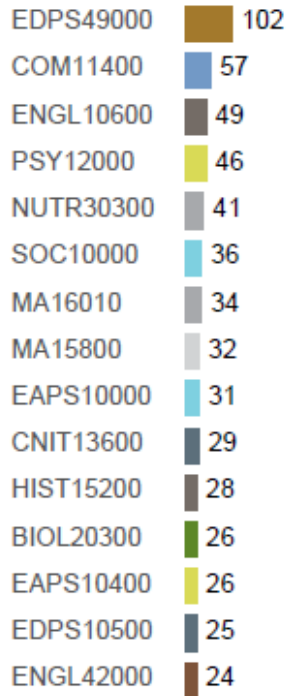
Enrollment Data

NUMBER OF STUDENT-ATHLETES BY COLLEGE OR SCHOOL

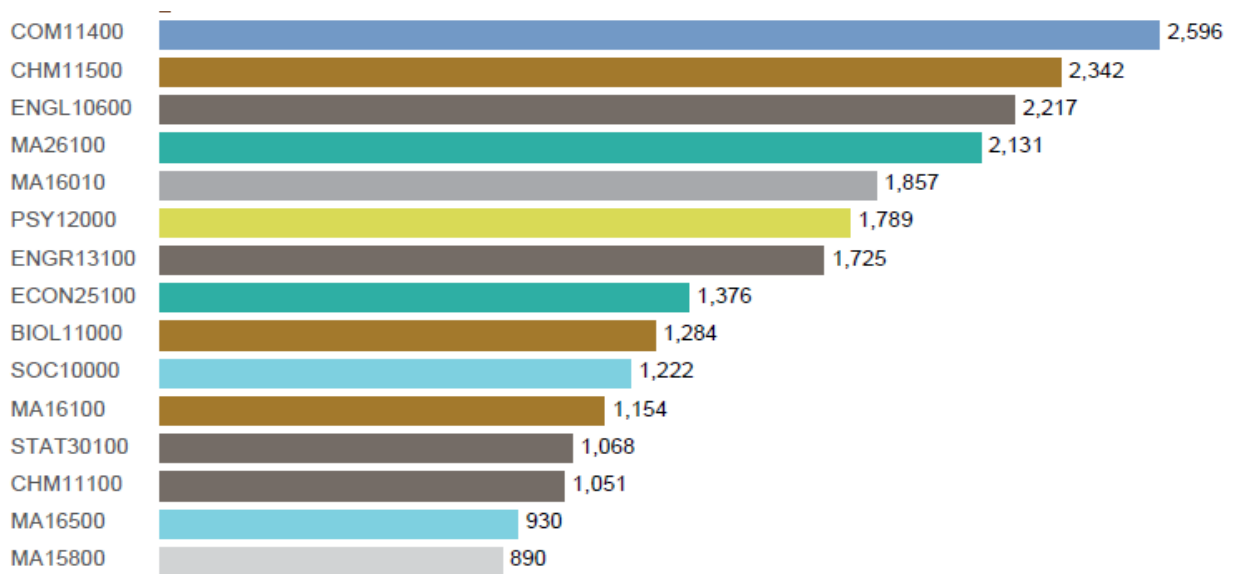
College or School	Number of student-athletes	
	<u>Fall 2017</u>	<u>Spring 2018</u>
Agriculture	20	19
Education	11	12
First Year Engineering	18	18
Engineering	41	41
Health and Human Sciences	125	119
Liberal Arts	113	99
Management	75	73
Pre-Pharmacy	3	2
Pharmacy	3	4
Science	19	22
Polytechnic Institute	62	55
Graduate School	9	7
Exploratory Studies	36	28
Veterinary Medicine	1	1

Course Enrollment Review: Top 15 Courses
 Fall 2017, Office of Institutional Effectiveness

Students who participate in Intercollegiate Athletics



Students who do not participate in Intercollegiate Athletics



Course Enrollment Review: Grade Distributions in Top 15 Courses
 Fall 2017, Office of Institutional Effectiveness

		A, A-, A+	B, B-, B+	C, C-, C+	D, D-, D+	F	Other: Withdrawl, Audit, Pass/No Pass, etc.
COM11400	Athlete	38.60%	40.35%	14.04%	5.26%		1.75%
	Non-Athlete	45.53%	42.30%	6.63%	1.73%	1.96%	2.00%
ENGL10600	Athlete	44.90%	28.57%	14.29%	10.20%	2.04%	8.16%
	Non-Athlete	68.38%	23.14%	3.65%	1.35%	2.30%	1.22%
MA16010	Athlete	32.35%	20.59%	26.47%	11.76%	2.94%	5.88%
	Non-Athlete	31.13%	27.30%	19.28%	10.39%	6.68%	5.22%
PSY12000	Athlete	26.09%	39.13%	21.74%	2.17%	4.35%	6.52%
	Non-Athlete	41.70%	30.18%	15.93%	5.48%	3.02%	3.69%
SOC10000	Athlete	38.89%	30.56%	22.22%	8.33%		
	Non-Athlete	33.47%	39.44%	18.99%	4.17%	2.54%	1.39%
MA15800	Athlete	18.75%	31.25%	28.13%	3.13%	3.13%	15.63%
	Non-Athlete	20.11%	35.06%	22.81%	6.97%	8.31%	6.74%
EDPS10500	Athlete	64.00%	28.00%	4.00%	4.00%		
	Non-Athlete	64.92%	21.76%	6.90%	2.38%	2.97%	1.07%
BIOL20300	Athlete	26.92%	26.92%	11.54%	7.69%	7.69%	19.23%
	Non-Athlete	22.31%	25.51%	26.15%	15.13%	5.90%	5.00%
EAPS10000	Athlete	41.94%	25.81%	22.58%	3.23%	6.45%	
	Non-Athlete	43.05%	37.34%	11.71%	2.05%	2.78%	3.22%
HIST15200	Athlete	28.57%	25.00%	35.71%		3.57%	7.14%
	Non-Athlete	51.46%	30.87%	10.49%	2.91%	2.14%	2.33%
ENGL42000	Athlete	66.67%	4.17%	16.67%	8.33%	4.17%	
	Non-Athlete	71.07%	21.36%	3.69%	0.78%	1.55%	1.55%
NUTR30300	Athlete	56.10%	34.15%	9.76%			
	Non-Athlete	72.03%	20.67%	3.76%	1.46%	0.63%	1.46%
EAPS10400	Athlete	34.62%	34.62%	23.08%	7.69%		
	Non-Athlete	50.18%	30.47%	7.17%	3.23%	3.94%	5.02%
CNIT13600	Athlete	62.07%	24.14%	10.34%	3.45%		
	Non-Athlete	57.14%	21.09%	7.48%	2.72%	2.72%	8.84%
EDPS49000	Athlete	91.18%	8.82%				
	Non-Athlete	87.50%					12.50%

High Enrollment Courses for Participants in Intercollegiate Athletics

(Courses with > 15% enrollment by participants in ICA)

Fall 2017, Office of Institutional Effectiveness



Grade Distributions for High Enrollment Courses
(Courses with > 15% enrollment by participants in ICA)

Fall 2015, Office of Institutional Effectiveness

		A, A-, A+	B, B-, B+	C, C-, C+	D, D-, D+	F	Other: Withdrawl, Audit, Pass/No Pass, etc.
EDPS49000	Athlete	91.18%	8.82%				
	Non-Athlete	87.50%					12.50%
ASL20200	Athlete	14.29%	14.29%	42.86%	28.57%		
	Non-Athlete	52.17%	30.43%	13.04%			4.35%
COM41100	Athlete	75.00%		25.00%			
	Non-Athlete	64.29%	28.57%		7.14%		
EAPS19100	Athlete	100.00%					
	Non-Athlete	50.00%				16.67%	33.33%
OLS59000	Athlete	40.00%	20.00%	20.00%		20.00%	100.00%
	Non-Athlete	52.38%	19.05%	4.76%		4.76%	95.24%
CSR10000	Athlete	68.75%	25.00%	6.25%			
	Non-Athlete	77.46%	11.27%	4.23%	7.04%		
TLI31400	Athlete	57.14%	28.57%	14.29%			
	Non-Athlete	42.86%	37.14%	11.43%	2.86%	5.71%	
CNIT13600	Athlete	62.07%	24.14%	10.34%	3.45%		
	Non-Athlete	57.14%	21.09%	7.48%	2.72%	2.72%	8.84%
HK25300	Athlete	40.00%	60.00%				
	Non-Athlete	34.62%	50.00%	11.54%		3.85%	
OLS47700	Athlete	66.67%	33.33%				
	Non-Athlete	68.75%	18.75%				12.50%
SLHS34500	Athlete	100.00%					
	Non-Athlete	100.00%					
CSR34400	Athlete	54.55%	9.09%	9.09%			27.27%
	Non-Athlete	60.66%	13.11%	3.28%		3.28%	19.67%

Appendix 4: Examples of Student Involvement in Community Service During 2017-18

All Teams

- The Purdue Cancer Challenge
- IMPACT (Influencing/Mentoring by Purdue Athletes w/Cardinal Tradition)
- BoilerMaker Wish (Purdue Athletes making a wish come true for physically challenged children in the community)
- Shoes for Boys and Girls at Salvation Army
- Walking dogs at Natalie's Second Chance Shelter
- John Purdue Thank-a-Thon & Scholarship Day
- Dr. Seuss Reading Day
- National Walk to School Day
- Mortar Board's Reading is Leading
- Purdue's Dance Marathon

Basketball-Men's

- Participated in Purdue Cancer Challenge
- Read to kids at the Patty Jischke Child Center
- Helped with Back-pack Program
- Holiday shopping spree with Lafayette Family Services
- PU Dance Marathon
- Dinner and mentoring with the Cary Home of Lafayette
- Mentoring sessions with College Mentors Program
- Jay Cooperider Memorial 5K
- Mortar Board's Reading is Leading
- Athletic Advisory Board Guest Speakers
- Cary Home Basketball Court Dedication Celebration
- YMCA Basketball Court Dedication Celebration
- Wabash Riverfest
- Kids Club clinics

Basketball-Women's

- Hunger Hike
- Feast of the Hunter's Moon
- 5K Run for the Cure
- Relay for Life Cancer Walk
- International Day Event
- Adopt a Family for Christmas: Provided all gifts and clothes to a family
- Provided free WBB clinics
- Think Pink Initiative
- Participate in Purdue Cancer Challenge
- Community Service Boys/Girls Club
- PU Dance Marathon
- BoilerMaker Wish with special needs children
- IMPACT: 1 on 1 mentoring to underprivileged school aged children
- Volunteering at Hanna Community Center

- Natalie's Second Chance Animal Shelter
- Championing Equality Event

Football

- Reading is Fundamental
- College mentor for Kids
- Purdue University Football Blood Drive
- Books and Chocolate Milk
- Read Books to Cumberland Elementary School children
- Purdue University Dance-a-Thon Benefit for Riley's Hospital
- Haiti, South Africa Mission Work
- Participate in Purdue Cancer Challenge
- Spelling Bee Team for Spell Day
- IMPACT: 1 on 1 mentoring to underprivileged children at Happy Hollow School
- BoilerMaker Wish with special needs children
- Volunteered at Lynn Treece Boys and Girls Club
- Volunteered at Patty Jischke Early Care and Education Center
- Food Finders Food Bank
- Team members spoke at Wainwright Middle School on Leadership
- Participated in Bowl for Kids' Sake benefitting Big Brothers/Big Sisters
- Accelerated Reader program at Hershey Elementary
- Dream Season
- PALS
- Mortar Board's Reading is Leading
- Habitat for Humanity
- Bowling Your Heart Out - Josh Lindblom Foundation and Riley Kids
- Aster Place Assisted Living Prom
- West Lafayette Parks and Rec - Helped mulch a trail
- Indy Event: made meals for the homeless
- Tippy Stars - Special needs softball
- Northridge middle school football - players spoke to their team
- RiverFest Waterdrop kids race

Volleyball

- Participated in Women in Sports Day
- Kids Clinic (free volleyball clinic)
- Adopt a family for Christmas
- Participated in Sunnyside Jr High's Purdue Day
- Family Fun Fitness night at Glen Acres School
- Decorated Christmas trees for ASPS (Animal Shelter)
- Arthritis Walk
- Read at Klondike Elementary for Dr Seuss Week
- Mortar Board's Reading is Leading
- Participated in FCA's Mission Trip to Haiti
- Hunger Hike
- Junior Achievement Golf Outing

Purdue Global Update #3

Kaplan Entity Special Committee

Deb Nichols and Steve Beaudoin
Co-Chairs

September 10, 2018

Charge to the Committee

- General
 - Meet the University Administration (including Global Administration)
 - Discuss aspects of Purdue Global of interest/concern to the University Senate
 - Report findings to the Senate
 - Advocate for changes

What Did You Do This Summer?

- **Committee met at least monthly, with *ad hoc* meetings to address specific topics**
- **Issues of interest**
 - Resolving ‘Channel Conflicts’ between PUG, PU programs
 - Need for transparent, side-by-side marketing of PUG, PU programs
 - Common branding
 - How is IP handled at PUG, PU, combined?
 - Global NDA
 - Beaudoin sat on this issue, as it was not deemed most significant

Channel Conflicts

- **‘Channel Conflict’ between PUG Instructional Design and Technology MS, PU Learning Design and Technology MS**
 - Conflict resolved collaboratively using an idea from PU LDT
 - PU LDT retains MS program
 - PUG IDT ‘teaches out’ MS program, then teaches PU LDT concentration courses
 - Provides a path to admission into LDT for PUG graduates
- **Other channel conflicts remain**
 - **Waiting for resolution to be reported**
 - Nursing (RN to BSN: *PNW*)
 - Geofence (may have been solved)
 - Krannert (MBA)
 - Education (MS: Applied Behavior Analysis)
 - HHS (Master of Public Health)
 - HHS (Health Care Administration)
 - HHS (Human Development)
 - HHS (Psychology)

Future Channel Conflicts - Governance

- **How will future channel conflicts be resolved?**
 - College/Unit level cooperation
 - Deans will be informed of planned new programs
 - Units will meet to discuss plans and develop solutions if conflicts perceived
 - Units collaborate to find solutions
 - Agreements about marketing through to-be-developed website which steers candidates to appropriate programs
 - Differentiates via search terms, characteristics of students, machine learning
 - Deans and units will collaborate
 - Geo-fencing
 - If there is a sensible geo-rationale, students are channeled to appropriate programs depending on zip-code or region
 - Oversight committee comprised of President, Provost, Chancellor and others (unclear to committee) will weigh in as needed

Marketing and Branding

- **Multiple discussions about brand blurring**
 - Global programs should be marketed as 'Purdue Global' and not as only 'Purdue'
 - Concern that candidate students were routed to telemarketers who pressured for enrollment
 - PUG has marketing budget in excess of \$100M
 - How does PU benefit?
- **Solutions**
 - Retraining of marketers to emphasize appropriate engagement
 - Right message, right product, right audience
 - **Plan for a report to committee sometime this fall documenting effectiveness of retraining**
 - **Committee awaits meeting with PU marketing director**
 - PU will implement a single website (one landing place) that will route all prospects to appropriate programs/courses and guidance
 - Website will provide transparent marketing
 - Includes live help
 - **In progress, but still waiting for mockup**

Intellectual Property

- **Non-Disclosure Agreement, Confidential Information and Intellectual Property**
 - Committee was aware of NDA in April
 - Brought to PU administration attention late August
 - Meeting called immediately to discuss
 - B. Vandebosch arrived at meeting with plan to scrap NDA and move appropriate sections into PUG faculty policy/handbook
 - Replaced with policy in faculty handbook on 9/5
 - PUG faculty and staff must maintain PUG confidential information
 - **Committee awaits lists of PUG and PU confidential info**
 - **Confidential information**
 - Student data (FERPA)
 - Details of vendor practices (Wiley, KHE, etc.)
 - Expect there are other categories

Intellectual Property

- **Intellectual Property**
 - Global course development process
 - Committee of faculty, instructional designers, course designers develops initial course
 - Reviewed by second committee
 - Following iterations, 'Master course' is finalized – owned by Global
 - Master course is delivered by a team of instructors
 - If instructors contribute own content to course, they can take own content with them
 - **Global faculty cannot take master course with them if they leave, it is community intellectual property owned by Global**
 - Scholarly work
 - Publications, research results, etc.
 - Individual content that faculty add into a master course
 - **Treated same as PU – individual intellectual property, which faculty own**

Arbitration and HLC Review

- **Arbitration required for PUG students**
 - PU and PUG both have internal processes for resolving various student complaints
 - Last step in most PU processes ends with a committee or a single administrator
 - Last step in PUG processes goes one step beyond a committee or administrator, and ends with arbitration
 - **Committee awaits lists of PU and PUG processes for resolving common student complaints for side by side comparison**
- **August 30 – HLC mock review**
 - Cheryl Cooky, Deb Nichols, Steve Beaudoin, Natalie Carroll, PUG faculty
 - Host: Tom Flint
 - Experienced with HLC reviews
 - Familiarize panelists about expectations of HLC review
 - NO COACHING

HLC Review

- **HLC review**
 - Today and tomorrow
 - Faculty committee is called to participate tomorrow
 - Includes reps from PWL, PNW, PUG
- **Agenda set by HLC**
 - **3 evaluators charged with conducting the visit**
 - U of Arizona, Northern Illinois, Walden
 - No open faculty session (per HLC)

HLC Approval, 6-Month Review Details

- There are no preconditions – this is standard
 - “The evaluation will be focused on the appropriateness of the approval and the institutions’ compliance with any commitments made in the Change of Control application.”
- In short, they will be looking for evidence/documentation of:
 - 2A: Purdue Global policies are aligned with Purdue University
 - 2B: Transparency of information in communications to students
 - Seamless handoff of information/students between Global and Purdue system at same level of integration as with WL and Regionals
 - 2C: Formalized governance guidelines for the Global Board
 - *e.g.*, how independent of Purdue Trustees
 - 5B: A larger group of administrators, faculty and staff involved
 - Currently ~25 teams working on administrative details of integration
 - Will expand to include faculty (details not available – will keep asking)
 - 5C: An update to Purdue’s strategic plan to reflect online
 - Our current strategic plan makes no mention of Global
- Will bring an external panel (includes faculty) to perform review

Transfer Credit

- **How will transfer credit be handled at UG level?**
 - Indiana Commission on Higher Education (ICHE) requested that Global courses be added to the Core Transfer Library (CTL)
 - CTL is a set of courses which should transfer smoothly among partner schools
 - IU and PU both protested (unsuccessfully) Global courses being added to the CTL
 - Purdue faculty determine whether or not a course is accepted for credit, even if it is within the CTL
 - Concern persists that Legislature may pass laws mandating academic matters about the transfer of Global credit (as they did with AP credit)
 - **Committee still learning about this process**

Open Records

- **Global not subject to FOIA requests in the same way that PU is**
 - Rationale
 - Expensive and time consuming to respond to many open records requests
 - Correspondence that involves PUG and any non-PUG entity is still subject to open records/meetings laws
 - Administration will provide information about PUG processes
 - **Committee awaits list of what information will be routinely provided by PUG for comparison with what is provided by PU and for assessment of PUG**

PURDUE STUDENT GOVERNMENT

Aaron Banks
President

Inclusivity

- Inspiring Collaboration
- Outreach to build D&I Committee

Sustainability

- “Tools for a sustainable lifestyle”

Entrepreneurship/Innovation

- Tech Summit

PURDUE STUDENT GOVERNMENT

Governmental Relations

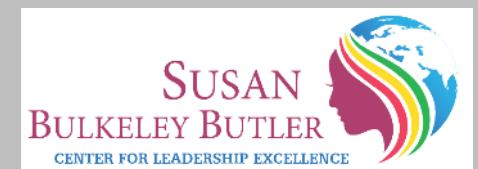
- BIG 10 Voter Challenge
- Governmental Liaison

Mental Health (VP – Olivia Keller)

- Health and Safety Task Force

Susan Bulkeley Butler Center for Leadership Excellence

Mangala Subramaniam
Chair & Director, Butler Center &
Professor, Sociology
mangala@purdue.edu
butlercenter@purdue.edu



www.purdue.edu/butler

Mission & Focus

Mission: to develop leadership capacity, especially for women, through research, education, and collaborations that advance inclusion and broaden representation in academic decision-making.

Provides: research support, educational seminars, workshops, and opportunities that enhance both aspiring and experienced leaders' ability to manage today's complex institutions

Recognize that women's experiences are diverse

Programs, Professional Development Workshops

Initiated Research

In 2017-18

Conference for Pre-tenure Women > 200 attendees

Keynotes, panel sessions

Series: Conversations about Inclusion



Women's Exchange Network-Uncensored (WEN-U)

Workshops:

Salary Negotiation; Mid-level leadership



Awards: Violet Haas, LIAA, DWS, fellowship

Faculty Workloads and Rewards Panel

How to address gendered loads of service – two speakers

In 2018-19

Conference for Pre-tenure Women – past week (>200).

Keynotes: President Emerita Teresa Sullivan & Dean Mia Tuan

Panel Sessions; Workshop –research productivity and writing

Two Series

Did You Know? Information About Resources on Campus

Butler Center Roundtables

Women's Exchange Network-Uncensored (WEN-U)

Awards: Violet Haas, LIAA, DWS, fellowship

Plan for Conference for Associates in Spring 2019

Research

Working paper series

Started in Spring 2018; Inaugural issue with invited pieces LINK;
Call for submissions for fall 2018 issue to be in Purdue Today soon

Climate Measures developed (faculty); research paper at conference; now special issue Frontiers in Education on methodological implications for studying climate in universities for various constituencies

Initiating:

Recognition – status

Impact of faculty search workshops

Thanks!

Questions? Ideas?